

# PICARRO

## **G2182-*i* Analyzer of $\delta$ D and $\delta^{13}$ C in CH<sub>4</sub>**



**Picarro, Inc.**

3105 Patrick Henry Drive  
Santa Clara, CA 95054, USA

Tel: +1 408 962 3900

[www.picarro.com](http://www.picarro.com)

Document Number 40-0010 Rev. B

## Picarro Analyzer User Manual

---

Thank you for purchasing a Picarro product. Your Picarro system is a quality product that has been designed and manufactured to provide reliable performance.

This User Manual (UM) is an important part of your purchase as it will help familiarize you with the system and explain the numerous features that have been designed into it. Please read this manual thoroughly before using your Picarro system.

Please contact Picarro or your authorized Picarro distributor should you have questions regarding specific applications or if you require additional information.

### NOTICES

#### DISCLAIMER AND RESERVATION OF RIGHTS

Picarro has prepared this manual solely for the information and use by its customers as a guide for the selection, installation, operation, and maintenance of the products described.

EXCEPT AS PROVIDED IN THE TERMS AND CONDITIONS OF SALE FOR PICARRO PRODUCTS, PICARRO ASSUMES NO LIABILITY WHATSOEVER, AND PICARRO DISCLAIMS ANY EXPRESS OR IMPLIED WARRANTY, RELATING TO SALE OR USE OF PICARRO PRODUCTS, INCLUDING LIABILITY OR WARRANTIES RELATING TO MERCHANTABILITY OR FITNESS FOR A PARTICULAR PURPOSE.

Picarro reserves the right to change or update the contents of this manual and the specifications of its products at any time, without notice. Picarro has endeavored to include information that is current and accurate as of the date of the publication or revision of this document, but Picarro does not guarantee that this document is error free or that it is accurate with regard to any particular specification.

Picarro expressly reserves all intellectual property rights, including all intellectual property rights relating to any product described in this manual. This document does not grant any license, express or implied, by estoppel or otherwise, to any intellectual property rights of Picarro or any third party.

#### PATENTS

The products described in this manual are subject to Picarro patents and patents pending. Information about Picarro patents applicable to these products is available at [www.picarro.com/company/patents](http://www.picarro.com/company/patents)

#### TRADEMARKS

Picarro and the Picarro logo are trademarks of Picarro, Inc.

Windows® is a trademark of Microsoft Corporation

Swagelok® is a trademark of Swagelok Company

Copyright © 2020 Picarro, Inc. All rights reserved

## Contact Information

---

### General Technical Support:

Email: [support@picarro.com](mailto:support@picarro.com)

Phone: +1 408 962 3991

### European Technical Center:

Email: [support@picarro.com](mailto:support@picarro.com)

Phone: +31 85 888 1650

### Customer Service:

Email: [orders@picarro.com](mailto:orders@picarro.com)

Phone: +1 408 962 3992

© 2020 Picarro, Inc. All rights reserved.  
3105 Patrick Henry Drive  
Santa Clara, California, 95054USA  
Phone 408.962.3900 • Fax 408.962.3200  
[www.picarro.com](http://www.picarro.com)

## Table of Contents

---

<b>1. INTRODUCTION TO TECHNOLOGY</b> .....	<b>6</b>
1.1 Cavity Ring-Down Spectroscopy (CRDS) .....	6
1.2 Relating Ring-Down Time to Absorption Intensity .....	7
1.3 Converting Absorption Intensity to Concentration .....	8
1.4 Spectral Precision and High Sensitivity Measurements .....	9
<b>2. CONVENTIONS</b> .....	<b>11</b>
<b>3. ACRONYMS</b> .....	<b>12</b>
<b>4. SAFETY</b> .....	<b>13</b>
4.1 General Safety .....	13
4.2 Laser Safety .....	14
<b>5. UNPACKING THE ANALYZER</b> .....	<b>16</b>
5.1 Inspect the Shipping Boxes .....	16
5.2 Unpack the Shipping Boxes .....	16
<b>6. ANALYZER OVERVIEW</b> .....	<b>19</b>
6.1 Intended Use .....	19
6.2 External Vacuum Pump.....	19
6.3 Analyzer Specifications .....	20
<b>7. INSTALLATION</b> .....	<b>21</b>
7.1 Analyzer and Vacuum Setup .....	22
7.2 Connecting to the Analyzer Inlet.....	24
7.3 Setting Up a Monitor, Keyboard, and Mouse .....	25
<b>8. BASIC OPERATION</b> .....	<b>26</b>
8.1 Startup Procedure .....	26
8.2 Desktop Icons and Folders.....	28
8.4 Shutdown Procedure .....	31
8.5 In case of an Electrical Power Outage .....	32

<b>9. STATUS LOG MESSAGES .....</b>	<b>33</b>
9.1 Normal Start-Up Messages .....	33
<b>10. LIST OF GUI FUNCTIONS .....</b>	<b>34</b>
10.1 Additional Tools and Information .....	34
10.2 Settings, Tools and Help Menus:.....	34
10.3 Digital Readouts .....	36
10.4 Data Log Filename and Path.....	37
10.5 Data Window .....	37
10.6 Instrument Status .....	37
10.7 Data Source and Data Key Pull Down Menus .....	37
10.8 Precision Pulldown Menu .....	37
10.9 Status Log Window .....	38
10.10 Reset Data Buffer Button.....	38
10.11 Data Buffer Level Meter.....	38
10.12 Graph Zooming .....	38
10.14 Cavity Ring-Down Spectrometer Controller.....	39
<b>11. FILE MANAGEMENT .....</b>	<b>40</b>
11.1 Overview .....	40
11.2 User Data .....	40
11.3 Archived Data.....	41
11.4 File Archival and Automatic Deletion of Old Files.....	42
11.5 ChemDetect Software .....	43
11.7 SETUP TOOL.....	47
<b>12. CALIBRATION.....</b>	<b>54</b>
12.1 Method 1: Using the GUI to Calibrate.....	54
12.2 Method 2: Using the “Picarro Data Recalibration Tool” to Calibrate ....	57
<b>13. TROUBLESHOOTING .....</b>	<b>59</b>
13.1 Power LED on Analyzer Does Not Illuminate .....	59
13.2 User Interface Program Does Not Start.....	59

13.3 Sample Pressure Cannot Be Controlled to Appropriate Value for Concentration Measurements .....	60
13.4 User Interface Program “Freezes”/Won’t Update Graphs as Data Are Collected .....	60
<b>14. SERVICE AND MAINTENANCE .....</b>	<b>61</b>
14.1 Particulate Filter Replacement .....	61
14.2 Tools Required: .....	61
14.3 Removing the Old Particulate Filter .....	62
14.4 Installing the New Filter .....	65
14.5 Cleaning .....	65
<b>15. LIMITED WARRANTY .....</b>	<b>66</b>
<b>APPENDIX A – REMOTE DATA ACCESS .....</b>	<b>68</b>
A.1 Serial Communication .....	68
<b>APPENDIX B – G2182-<i>i</i> MODE SWITCHER.....</b>	<b>71</b>
<b>APPENDIX C – DATA FILE VIEWER.....</b>	<b>72</b>
<b>APPENDIX D – EXTERNAL VALVE SEQUENCER.....</b>	<b>73</b>
D.1 Introduction .....	73
D.2 Default Configuration .....	74
D.3 Setting up Solenoid Valves .....	74
D.4 Setting Up Rotary Selector Valve .....	74
D.5 Valve Sequencer Software .....	75
D.6 Configuring a Valve Sequence .....	76
D.7 Loading and Running a Saved Sequence .....	76
<b>APPENDIX E – COORDINATOR WINDOW (OPTIONAL) .....</b>	<b>78</b>
<b>APPENDIX F – PEAK/PULSE INTEGRATION SOFTWARE.....</b>	<b>80</b>

# 1. INTRODUCTION TO TECHNOLOGY

Picarro analyzers use time-based, optical absorption spectroscopy of the target gases to determine concentration. They are based on wavelength-scanned cavity ring-down spectroscopy (WS-CRDS), a technology in which light re-circulates many times through the sample, creating a very long effective path length for the light to interact with the sample, thus, enabling excellent detection sensitivity in a compact and rugged instrument.

The Picarro analyzer is comprised of two modules:

- The **Analyzer** contains the spectrometer, sample chamber, and a computer with a hard drive to store and analyze data. The single analyzer module controls the operation of the system and converts spectroscopic measurements into gas concentration data.
- The **External Vacuum Pump** draws the sample gas through the instrument.

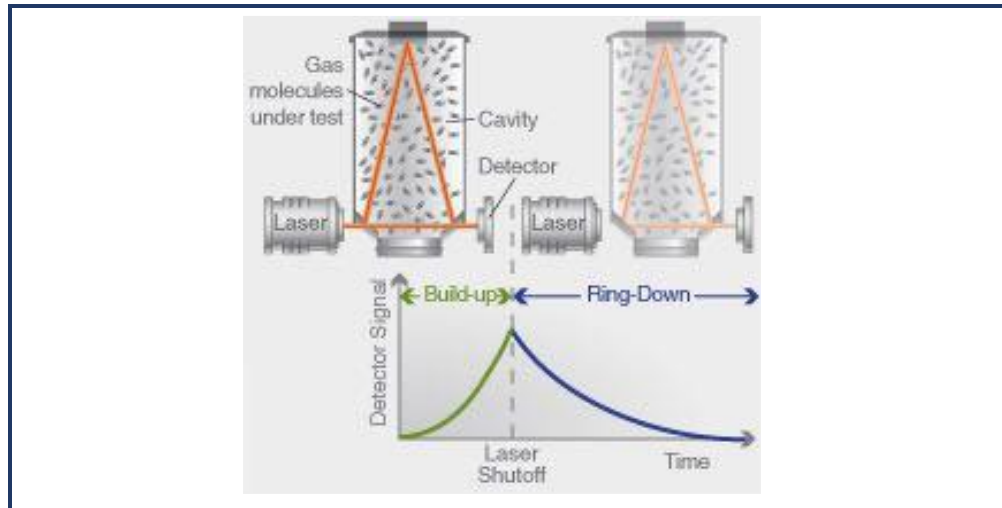
## 1.1 Cavity Ring-Down Spectroscopy (CRDS)

Nearly every small gas-phase molecule (e.g., CO<sub>2</sub>, H<sub>2</sub>O, H<sub>2</sub>S, NH<sub>3</sub>) and isotopologue (e.g., H<sub>2</sub><sup>18</sup>O, <sup>13</sup>CO<sub>2</sub>, <sup>15</sup>N<sup>14</sup>N<sup>16</sup>O) uniquely absorb specific wavelengths of near-infrared light. The strength of the light absorption is related to the concentration of a molecule in a sample and the distance that light travels through the sample, called the path length.

Conventional infrared spectrometers are typically only sensitive enough to detect trace gases at levels in the part-per-million. Cavity Ring-Down Spectroscopy (CRDS), on the other hand, is one thousand to one million more times sensitive.

In Picarro analyzers, light from a single-frequency laser enters a cavity where three mirrors reflect the laser light as seen in Figure 1. The light enters through the mirror closest to the laser, bounces off the angled mirror in the lower right corner of the cavity, travels to the hemispherical mirror at the top of the cavity, bounces toward the mirror in the lower left corner of the cavity, and then returns to the first mirror. This motion becomes a continuous traveling light wave, which is represented by the dark orange path in Figure 1.

**Figure 1:**  
Schematic of  
the Picarro  
CRDS analyzer  
cavity



When the laser is on, the cavity quickly fills with laser light. A small amount of the laser light is transmitted through the mirror closest to the photodetector, which turns the incident light into a signal that is directly proportional to the light intensity in the cavity.

When the photodetector signal reaches a threshold level (in a few tens of microseconds), the laser is turned off. The light contained within the cavity continues to bounce between the mirrors (about 40,000 times). Since the mirrors have slightly less than 100% reflectivity (99.999%), the light inside the cavity steadily leaks out of the cavity. The intensity of the light reaching the detector decreases, falling exponentially until it reaches zero. This decay, or "ring-down," is measured in real time by the photodetector.

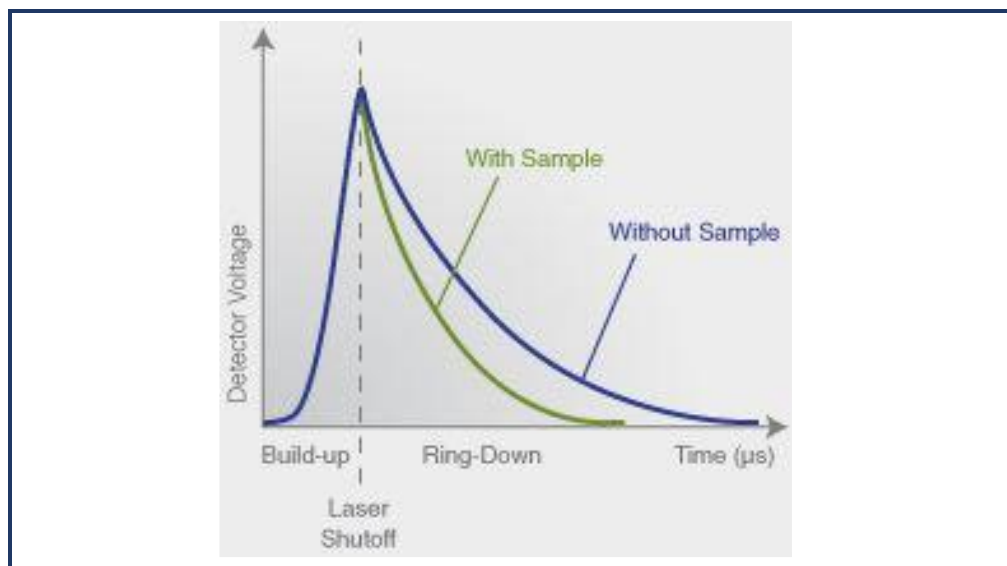
## 1.2 Relating Ring-Down Time to Absorption Intensity

The time it takes to ring-down is inversely related to the total optical loss in the cavity, including the strength of molecular absorption at a given wavelength of light. For an empty cavity, the time it takes for the intensity to decrease by a given percent is determined solely by the reflectivity of the mirrors. A cavity containing gas that absorbs light will have a shorter ring-down time than an empty cavity. As the light circulates in a cavity with a gas sample, the molecular absorption by the gas results in a decrease of the light intensity.



Determining absorption intensity at a specific wavelength requires comparing the ring-down time of an empty cavity to the ring-down time of a cavity that contains gas. Picarro instruments gather measurements from an “empty” cavity by switching the light to wavelengths that are not absorbed by the target molecules. The analyzer subsequently measures ring-down times at wavelengths that are absorbed by the target gas. The analyzer automatically and continuously compares these two types of ring-down times, and the software uses those comparisons to calculate absorption intensities.

**Figure 2:**  
Light intensity as a function of time in a CRDS system

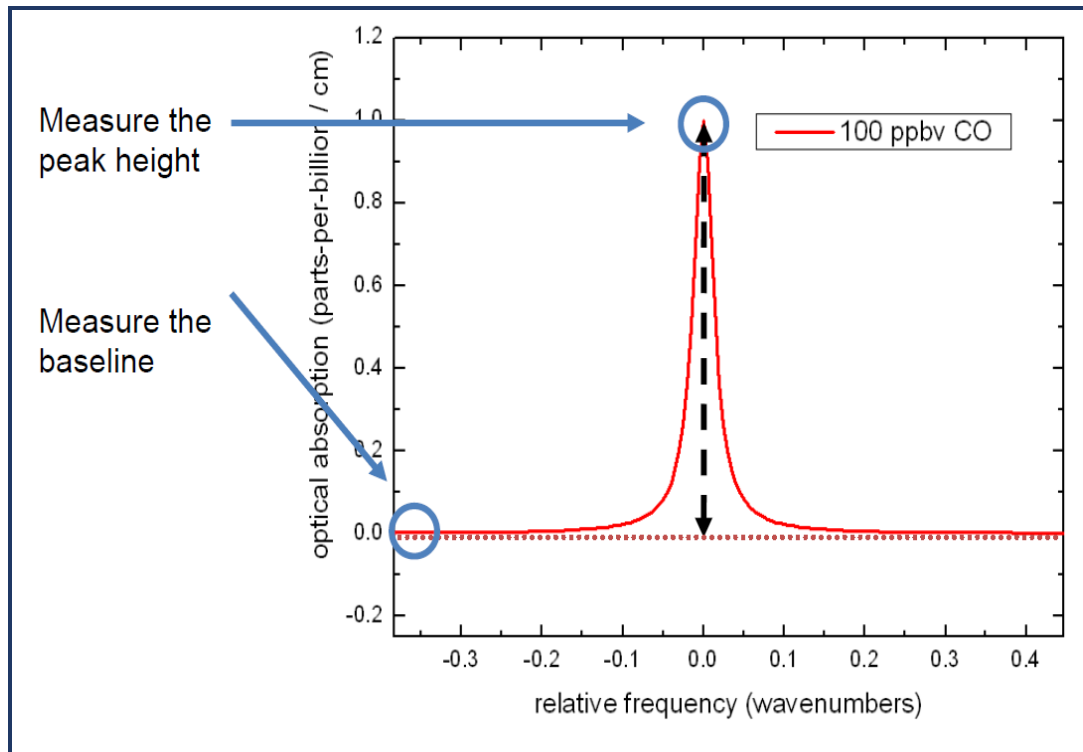


### 1.3 Converting Absorption Intensity to Concentration

Plotting the absorbance at each measured wavelength generates an optical spectrum. This spectrum contains absorbance peaks that are unique to each molecule in the sample. The height of a particular absorption peak is proportional to the concentration of a molecule that generated the signal.

The height of the peak is calculated by subtracting the maximal absorbance from the baseline absorbance. Figure 3 shows a plot of ideal optical spectra with a clean, uniform baseline on either side of the absorption peak.

**Figure 3:**  
Absorption  
Spectral  
Curve



Optical spectra often contain several absorption lines, nested closely together. A particular absorption peak may be visible between lines, but the absorption may not return to the baseline before it rises in response to another molecule. Picarro analyzers calculate the baseline underneath a poorly resolved peak by modeling the absorption peaks from other surrounding molecules and subtracting contributions from neighboring peaks to the absorption intensity.

## 1.4 Spectral Precision and High Sensitivity Measurements

Picarro analyzers contain two features that provide high spectral precision:

- Proprietary **wavelength monitor (WLM)** that measures the absolute laser wavelength to a precision that is a few orders of magnitude narrower than the spectral linewidth: Picarro's patented WLM measures absolute laser wavelength to a precision more than 1,000 times narrower than the observed Doppler-broadened linewidth for small gas-phase molecules. The instruments lock the laser to the WLM, and then the monitor tunes to wavelengths known to be maximally and minimally absorbed by the target molecule. The result is closely clustered absorption intensities at and around the wavelength of peak absorption.







- Precise temperature and pressure control in the sample cavity: Accurate absorption measurements at precisely known wavelengths account for little unless the temperature and pressure of the CRDS measurement cavity are known. The observed line intensity and shape depend on the temperature and pressure inside the sample cavity. To completely minimize instrument measurement drift, temperature and pressure must be actively stabilized to constant values.

For precise temperature control, the sample cavity is surrounded by layers of thermally insulating material to provide a high degree of passive thermal stability. The cavity is further actively stabilized by means of a solid-state heating system locked to the output of a thermal sensor. This enables the temperature of the cavity to be within 20 mK of the set temperature.

For precise pressure control, the cavity pressure is monitored using a high-linearity pressure transducer. The system computer uses this pressure data in a feedback loop to control proportional valves that adjust the inlet and outlet gas flow of the cavity.

## 2. CONVENTIONS

The following icons are used throughout this manual to emphasize important information in the text. These icons indicate dangers to either the operator or to the analyzer, and other important information.

	<p>Consult the user's manual for important information (When you see this symbol placed at hazard points on equipment, consult the user manual).</p>
	<p><b>NOTE</b> is important information that you should be aware of before proceeding.</p>
 <b>WARNING</b>	<p><b>WARNING</b> indicates an imminent danger to the user.</p>
 <b>WARNING</b>	<p><b>LASER WARNING</b> alerts you of a laser danger.</p>
 <b>CAUTION</b>	<p><b>CAUTION</b> alerts you of a potential danger to equipment or to the user.</p>
 <b>REMINDER</b>	<p><b>REMINDER</b> is a helpful hint to procedures listed in the text.</p>

### 3. ACRONYMS

This manual includes various acronyms. For definitions, see below:

Acronym	Definition
CRDS	Cavity Ring-Down Spectroscopy
GUI	Graphical User Interface
cm	centimeters
mm	millimeters
" (as in 1/4")	Inches
CH <sub>4</sub>	Methane
H <sub>2</sub> O	Water
NH <sub>3</sub>	Ammonia
CO <sub>2</sub>	Carbon Dioxide
HB	Hotbox
WB	Warm box
ppm	Parts Per Million
ppb	Parts Per Billion
‰	per mil
°C	degrees Celsius

## 4. SAFETY

### 4.1 General Safety

#### CDRH Certification

This Picarro Analyzer complies with 21 CFR Chapter 1, sub-chapter J, and is classified as a Class 1 laser system when all panels and covers are on.

#### CE Certification

This Picarro Analyzer complies with the European standards and the instrument is affixed with a CE label. This CE label is located on the rear of the instrument.



WARNING

---

**Using this analyzer in a manner not specified by Picarro may result in damage to the analyzer, and render it unsafe to operate.**

---



WARNING

---

**This analyzer is for indoor use only and has an ingress protection rating of IPx-0. Analyzer is NOT protected against exposure to water including dripping, spraying, splashing or immersion.**

---



WARNING

---

**Do not operate in an explosive atmosphere! Do not operate in the presence of flammable gases or fumes.**

---



CAUTION

---

**The analyzer contains no user serviceable components except the particulate filter. Do not attempt repairs; instead, report all problems to Picarro Customer Service or your local distributor. Please contact Picarro if you have any questions regarding the safe operation of this equipment.**

---



WARNING

---

**The inlet gas connector on the back panel of the Analyzer, and its immediate vicinity, runs hot during operation of the analyzer. Take care when connecting gas lines or working at the rear of the instrument to wear protective gloves or avoid contact with these surfaces.**

---



WARNING

---

**This analyzer weighs 46 lbs. (20.9 kg). Use the technique described below when lifting the analyzer.**

- a. Before lifting, inspect the unit for slippery substances or sharp edges.
  - b. Lift with two people, one on each side of the analyzer.
  - c. Crouch down and stay close to the unit. Always keep your back as straight as possible.
  - d. Position your feet for sturdy balance. Lift with your legs, not your back.
  - e. Do not twist the back while carrying the unit. Rotate direction with hip joints.
  - f. Lower the unit by bending at the knees.
- 

## 4.2 Laser Safety



WARNING

---

**This equipment is classified as a Class 1 laser product with an embedded 3B laser in accordance with EN 60825-1:2014. Do not to open the enclosure where this label is placed; there are no user serviceable parts inside.**

---

The following Laser Safety Label is affixed to the outer cover of the analyzer.



WARNING

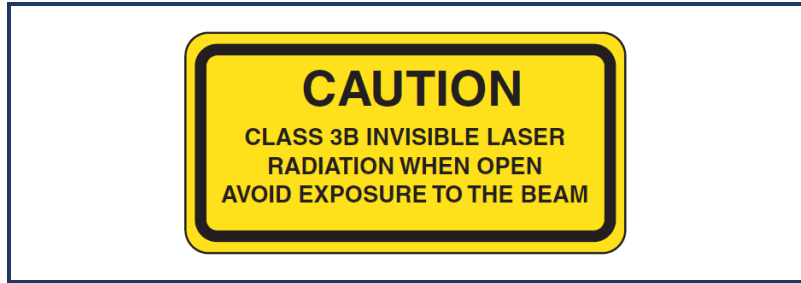
---

**The laser is a Class3B when exposed. Only operate or service this device in accordance with the instructions in this guide, and only open the device in an approved laser safe service area using appropriate laser-safety glasses.**

---

The following **Laser Safety Label** is affixed to the inside of the analyzer:

**Figure 4:**  
Laser Safety  
Label



**WARNING**

---

**Use of controls or adjustments or performance of procedures other than those specified herein may result in hazardous radiation exposure.**

---



## 5. UNPACKING THE ANALYZER

### 5.1 Inspect the Shipping Boxes

Picarro products are inspected and tested before leaving the factory. Their packing containers have been designed to keep the equipment safe from damage during transit.

Inspect the condition of the boxes upon arrival. The larger box includes the analyzer and most of the accessories. Even if the outer box shows damage, the inner box holding the analyzer is cushioned enough that it will protect the instrument under most circumstances.

If the equipment does appear to be damaged, photograph the damages and contact Picarro (email pictures if possible) as soon as possible.

### 5.2 Unpack the Shipping Boxes

This section describes the contents of the shipping boxes:

Inspect each item to ensure it is not damaged.

If items are missing, contact Picarro.

Keep the shipping packages to reuse when transporting the analyzer.

Contact Picarro for options on transporting systems to remote labs.

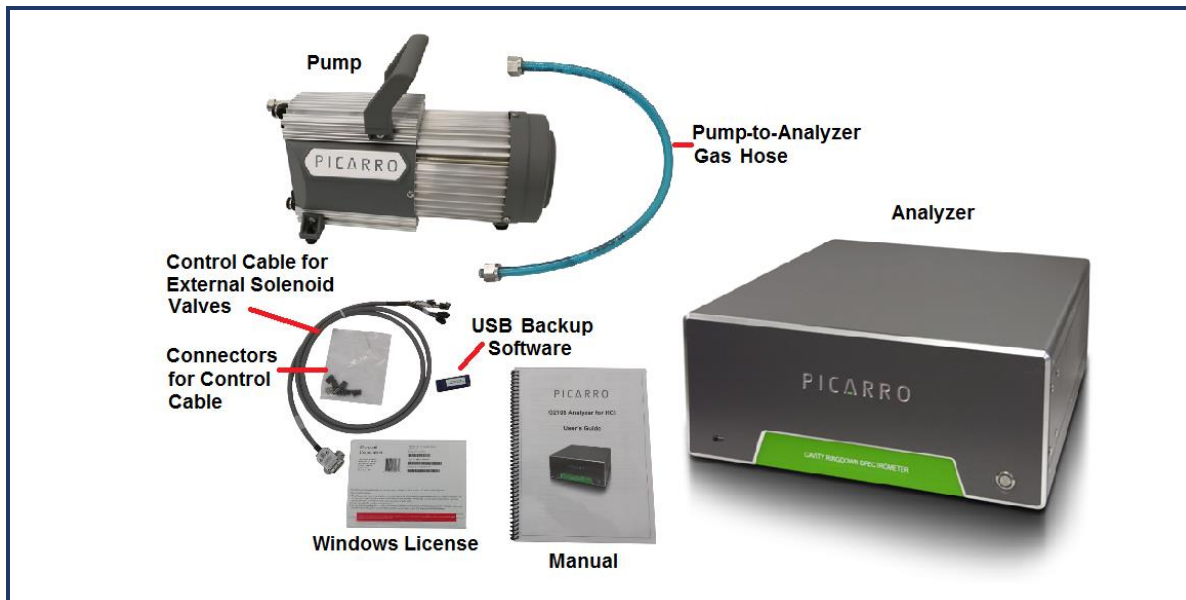


---

**This analyzer weighs 46 lbs. (20.9 kg). Use the technique outlined in the General Safety section on page 14 when lifting or moving the analyzer.**

---

**Figure 4:**  
Box Contents



## Box One: Analyzer and Accessories

Item (qty)	Description
Analyzer (1)	Includes all the data acquisition, control, and communications hardware and firmware to perform all gas handling, spectral collection and analysis.
A/C Power Cables (1)	A power cable with connectors appropriate to your country is provided. The analyzer automatically adjusts to local voltage.
Keyboard (1)	USB keyboard
Mouse (1)	USB mouse
Control Cable (1)	For External Solenoid Valves
Nut (1) and Ferrules (2)	For connecting input line to analyzer INPUT
Document Packet (1)	Includes this manual, certificate of compliance, and Windows License.
USB Flash Drive	Contains backup software.

## Box Two: Vacuum Pump and Accessories

Item (qty)	Description
Pump (1)	Provides vacuum required for sample gas sequencing into and out of the analyzer.
A/C Power Cable (1)	A power cable with connectors appropriate to your country is provided.
Vacuum Hose (1)	Hose to connect the pump to the analyzer.
Pump Manual (1)	Detailed instructions for pump.

## 6. ANALYZER OVERVIEW

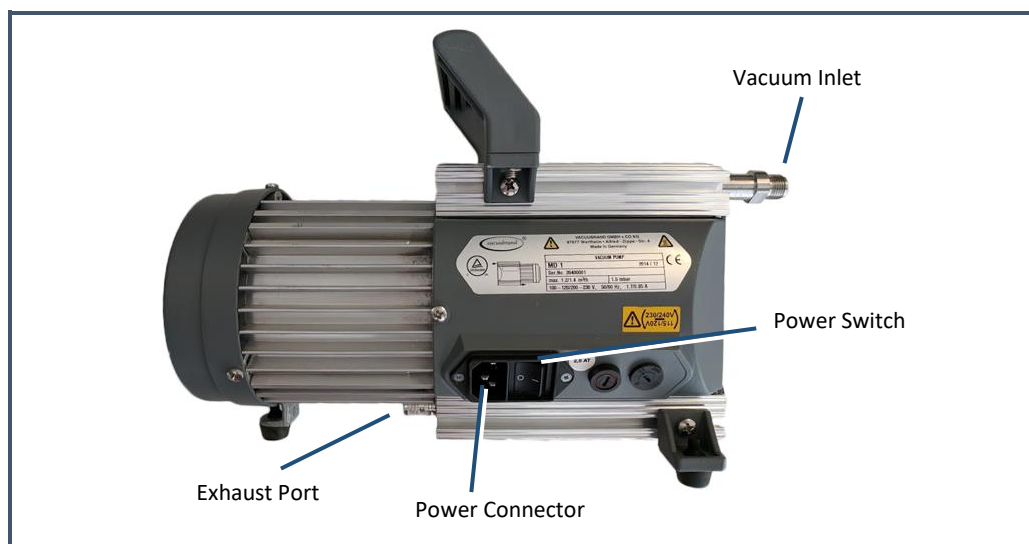
### 6.1 Intended Use

The G2182-i Analyzer measures concentrations of  $\delta D$  and  $\delta^{13}C$  in  $CH_4$  precisely using Picarro's patented Cavity Ring-Down Spectroscopy (CRDS) technology. The analyzer can be deployed in a lab or in the field, allowing in-situ analysis for both trace and ambient amounts of  $\delta D$  and  $\delta^{13}C$  in  $CH_4$  monitoring applications.

### 6.2 External Vacuum Pump

The external vacuum pump is used to maintain cavity pressure inside the analyzer. The pump should be connected and running whenever the analyzer is in use.

**Figure 5:**  
External  
vacuum pump



## 6.3 Analyzer Specifications

<b>Weight (Total)</b>	60.4 lbs. (27.4 kg), Including external pump
<b>Analyzer</b>	46 lbs. (20.9 kg)
<b>Pump</b>	14.4 lbs. (6.5 kg)
<b>Analyzer Dimensions</b>	Length: 17.55" (43.2 cm) Width: 17" (44.6 cm) Height: 7" (17.8 cm)
<b>Temperature Range</b>	Storage: 0 °C to 70 °C; Operation: 10 °C to 35 °C
<b>Sample Flowrate</b>	<500 sccm at 760 torr (101 kPa)
<b>Ambient Humidity Range</b>	<85% R.H. non-condensing
<b>Maximum Altitude</b>	10,000 ft. (operation)
<b>Clearance</b>	Front: 6" (15.3 cm); Rear: 6" (15.3 cm)
<b>Power Requirements</b>	100 to 240 VAC; 47 to 63 Hz (auto-sensing)
<b>Startup Power</b>	<375 W at start-up (Analyzer and Pump)
<b>Steady-state Power</b>	120 W (Analyzer), 150 W (Pump) Steady-state operation
<b>Mains Supply Voltage Fluctuation</b>	±10% of the nominal voltage
<b>Minimum Rated Circuit Amperage</b>	10 A @115 VAC 5 A @230 VAC
<b>Liquid Ingress Protection</b>	None

## 7. INSTALLATION

This section describes the setup and installation of the Picarro Analyzer. Please read and understand this section thoroughly before proceeding with the installation.



WARNING

---

**Using this analyzer in a manner not specified by Picarro may result in damage to the analyzer and render it unsafe to operate.**

---



WARNING

---

**Do not attach electrical power to, or start the analyzer until *after* attaching and turning on the External Vacuum Pump. Do not disconnect the vacuum line while the analyzer is running. Failure to do so could result in damage to the optics.**

---



WARNING

---

**Picarro sells USB enabled devices, such as GPS, which is approved for use. Please do not connect USB hubs or unapproved USB devices, other than flash drives to the computer because they can interfere with the operation of the analyzer.**

---



WARNING

---

**If rack mounted, the Analyzer cannot support itself using a front rack mount kit alone. The instrument *must* be supported by a shelf or additional rails attached to the rack.**

---



CAUTION

---

**If the analyzer has been stored at less than 10 °C, allow the components to equalize to room temperature before starting the installation process.**

---



CAUTION

---

**Analyzer is for indoor use only and has an ingress protection rating of IPx-0. Analyzer is NOT protected against exposure to water including dripping, spraying, splashing or immersion.**

---



CAUTION

When the analyzer is being integrated to an external system, the safety of that system is the responsibility of the assembler of that system.



CAUTION

During installation and operation, do not position the analyzer so that it is difficult to operate the disconnecting device.



NOTE

Take care to ensure that warm air is exhausted from an enclosure in which the analyzer is mounted.



CAUTION

It is imperative that the analyzer have adequate ventilation and/or cooling to maintain the ambient temperature below 35 °C when operating. Failure to provide adequate airflow, especially clearance at the front and rear panels, to ensure proper airflow and/or cooling to the analyzer will result in overheating of the analyzer causing a shutdown and potential damage. There should be 4" (10cm) of clearance in the front and back of the analyzer.

Thermal Specifications	Min	Max	Description
Ambient Operating Temperature	10 °C	35 °C	Worst-case environmental limits (unless otherwise specified)

## 7.1 Analyzer and Vacuum Setup

1. Remove the Analyzer and the External Vacuum Pump from their respective shipping containers.



WARNING

This analyzer weighs 46 lbs. (20.9 kg). Use the technique outlined in the General Safety section on page 14 when lifting or moving the analyzer.

2. Place the Analyzer on a bench top or flat surface. Place the External Vacuum Pump near-by or on the floor. Don't push the analyzer into position yet, there are cables to be installed on the back panel.
3. Unpack the analyzer accessories. The Certificate of Compliance and USB drive should be stored in a safe place and may be required if you contact Picarro with questions about your analyzer.
4. Remove the caps from the analyzer's INLET and VACUUM connection ports. Save the caps; you should reinstall them when the analyzer is stored, moved or shipped.
5. Remove the cap from vacuum pump's inlet. Save the cap for later use. Reinstall the caps when the pump is stored, moved or shipped.
6. Connect one end of the vacuum hose to the pump: hand tighten the nut and then use an 11/16" wrench (not included) to make an additional turn of one flat (about 60 degrees).
7. Connect the analyzer to a power source using the supplied AC power cable.



CAUTION

---

**Use the AC power cables supplied with the analyzer or a similarly rated cable. Check with Picarro technical support if you have questions about power cable replacement. An inadequately rated power cable can result in equipment damage.**

---



CAUTION

---

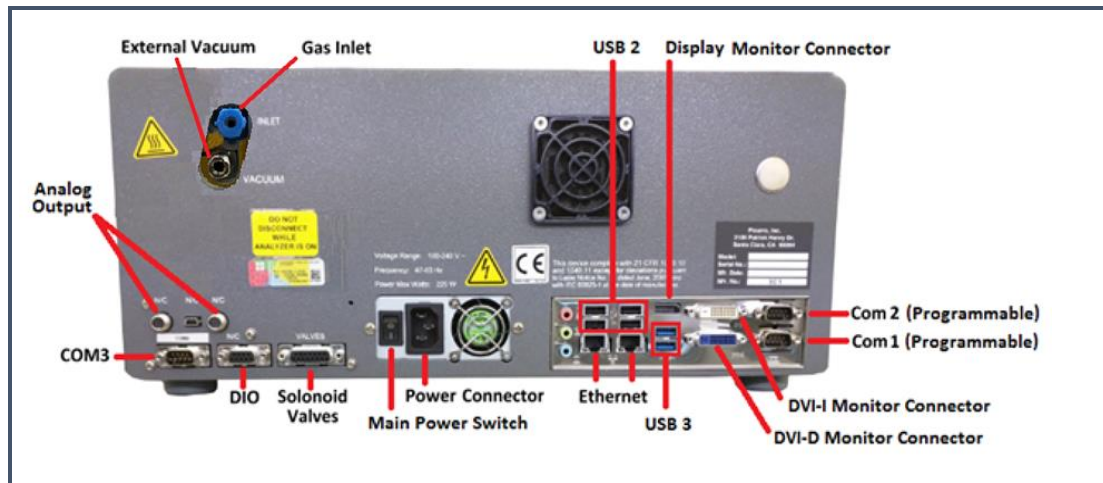
**Cords shall be RATED for the maximum current for the equipment and the cable used shall meet the requirements of IEC 60227 or IEC 60245. Cords certified or approved by a recognized testing authority are regarded as meeting this requirement. The connector type used should be: IEC320 C13.**

---

8. If desired, attach a tube to the External Vacuum Pump exhaust port and direct to a safe place for venting the mixture of sample gases.
9. Select the appropriate voltage, 110V or 220V, for the External Vacuum Pump using the Power Switch located on the pump.
10. Connect the External Vacuum Pump to a power source using the other AC power cable.



Figure 6:  
Analyzer Back  
Panel



NOTE

The software to operate the instrument will start automatically after the operating system has loaded. The user interface will appear a few seconds after the instrument software starts. See “*Startup Procedure*” on Page 26.

## 7.2 Connecting to the Analyzer Inlet

Connect to the inlet of the analyzer using ¼" OD PTFE or PFA tubing using the supplied plastic ¼" PFA inlet nut and ferrules.



WARNING

When using compressed gases, follow all appropriate safety conventions, including use of eye protection, physical restraint of cylinders, etc.

### Making a New Connection:

When using new tubing, follow these steps.

1. Place the two ferrules inside the nut as shown.

Figure 7:  
Orientation of  
ferrules and  
nut



2. Loosely connect the nut to the INLET on the back panel of the analyzer about a full turn, being careful not to let the ferrules fall out.
3. Insert the tubing into the back of the nut, feeding it in as far as possible without deforming the tubing.
4. Hand tighten the nut.
5. Using a 5/8" wrench (not included), tighten the nut approximately seven flats (420 degrees).

## Replacing a Connection

1. When reattaching tubing that already has a nut connected:
2. Inspect ferrules. If you see any damage, replace the ferrules and follow the directions above for making a new connection.
3. If there is no damage, hand tighten the connector to the analyzer's INLET.
4. Using a 5/8" wrench (not included), tighten the nut approximately one flat (60 degrees).

## 7.3 Setting Up a Monitor, Keyboard, and Mouse

A video monitor (not included), keyboard, and mouse are required for monitoring device operations, viewing or changing settings (including setting user permissions), or validating device performance.



NOTE

---

**This device will operate under its default settings without any direct control of the internal software.**

---

1. Connect a keyboard to one of the available USB ports.
2. Connect a mouse to one of the available USB ports.
3. Connect a monitor to one of the DVI monitor ports. The analyzer will detect the connection and adjust the resolution to match the monitor.
4. Connect the monitor to a power source.
5. Turn on power to the monitor.

## 8. BASIC OPERATION

### 8.1 Startup Procedure

This section describes the steps to power on the system. These steps are sufficient for operating the instrument.



CAUTION

---

**Always turn on the external pump before turning on the analyzer.**

---

1. Switch on the external vacuum pump.
2. Switch on the main power to the analyzer.
3. Press the soft power button located on the front panel. The software will start automatically, and the analyzer will display the CRDS Data Viewer window. Data Viewer features are detailed in APPENDIX C – DATA FILE VIEWER
4. Wait approximately 45 minutes for the system to power, initialize, and stabilize.
5. Once the cavity pressure and operating temperature are at their proper setpoints and stable, the analyzer will start measuring.

When the main power is turned on the analyzer will automatically start, including the Graphical User Interface (GUI). The GUI will look like the image below. A full explanation of the GUI functions can be found in **Section 10**.



NOTE

---

**As the instrument is starting up, it is normal for there to be a delay in reporting data. This can take several minutes depending on how long it takes for the internal temperature and pressure to reach their operating points, and it is normal during this time for some concentration readings to be negative or constant. The pull-down menus in the Data Viewer will not be populated until actual data is being reported. This is typically within less than 30 minutes from startup, but can take up to 1 hour to stabilize depending on ambient temperature.**

---



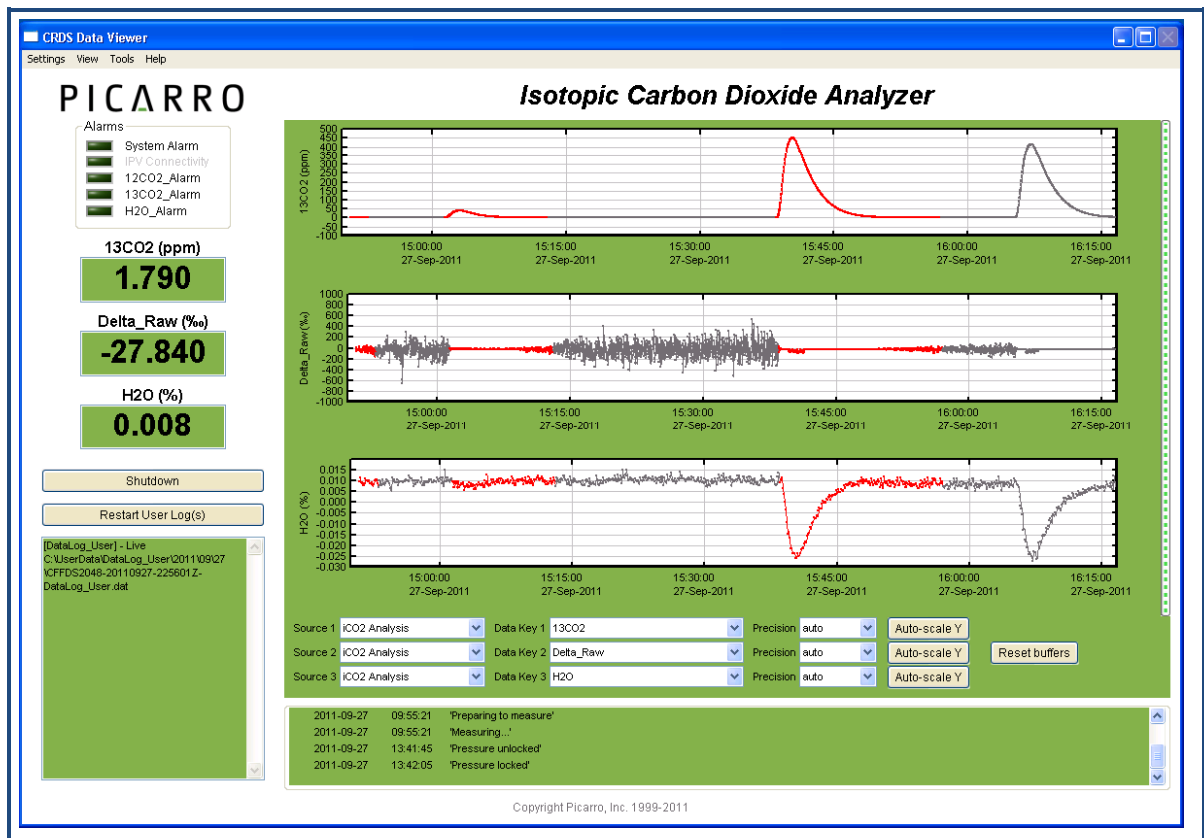
NOTE

---

**Throughout this manual, some of the GUI screenshots may be generic and/or not specific to the actual gas being analyzed. These figures are examples of universal analyzer functions and are used for training purposes.**

---

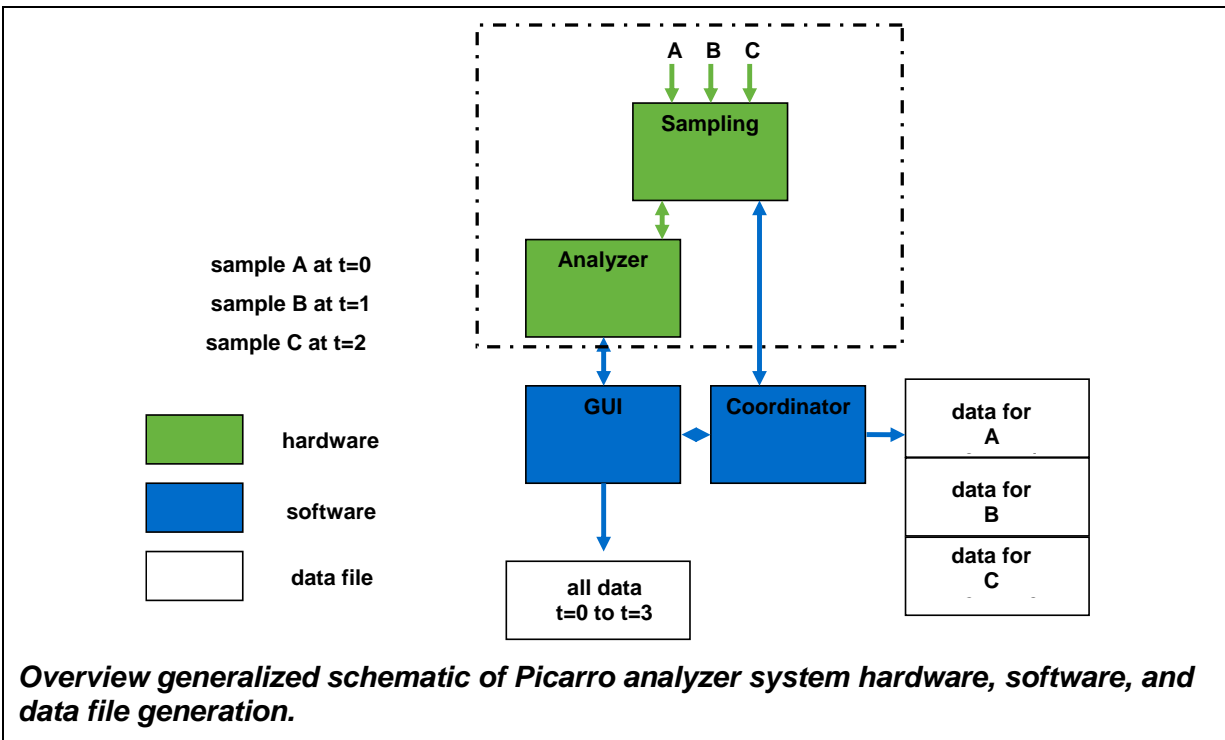
**Figure 8:**  
Picarro  
Analyzer  
GUI



Data will be saved automatically once the analyzer starts to produce data. The data in the GUI is the continuous real time read out from the analyzer. A user relevant subset of this data is stored in C:\Userdata\DataLog\_User\YYYY\MM\DD, where Y=year, M=month, D=day. Further details can be found under the file management section, **Section 11** of the manual.

You can change the various settings of data saving through an ini. file (see **Section 11** for more information). The Setup Tool also allows you to change data file saving details, in addition to allowing you configure which data element files are written to data files, digital data output (via serial port or TCP/IP), remote data delivery (via email), GUI properties and more (See **Section 11.6**).

In order to measure discrete samples (such as individual gas bags) or from multiple locations (when switching valves draw in ambient air from different heights. See **APPENDIX D – External Valve Sequencer** for more information) a separate software window (coordinator) is used to control the sample source and match the corresponding real time read out with the sample source. Depending on system configuration, coordinator programs may not be included.



The samples A, B, and C are introduced into the analyzer sequentially by a sampling module, if present. The sampling module could be a set of customer-supplied valves, a valve manifold, a discrete sampling module, or other device. The timing of sample introduction is controlled by the coordinator or valve sequencer software. The analyzer measures continuously and reports the data to the GUI which saves a single file where all data is reported as a function of time. The coordinator gets data from the GUI and creates a single file, and the data is reported as a function of sample.

## 8.2 Desktop Icons and Folders

On the Windows™ desktop, there will be the following icons and folders:

1. **Start Instrument:** When clicked, the analyzer will start measuring in the configuration that it was in when the software/analyzer was shut down.
2. **Coordinator Launcher:** Depending on the system's configuration, the coordinator program may not be included. Clicking on this icon will lead you to a window that will allow you to choose the proper coordinator to operate the peripheral module that came with your analyzer.
3. **Picarro Mode Switcher:** When clicked, you will be led to a window that will allow you to switch between various measurement modes. Most analyzer models are configured for one mode and may not include the

Mode Switcher. If the analyzer has multiple modes, this allows the user to switch between them easily.



4. **Picarro Controller:** When clicked, you will be led to a useful diagnostic panel allowing the user to see the analyzer’s internal temperatures, pressure, and spectroscopy in real time. This program has user-accessible functions, but it cannot change anything related to analyzer functionality. It is intended for diagnostic purposes only.

#### 5. Picarro Utilities Folders:

- i. **Data file Viewer:** When clicked, you will be led to a window that will allow you to convert between \*.dat and H5 data files and to make various graphical representations of your data. The instructions on using the Data File Viewer software are described in Appendix B on this manual.
- ii. **Data Recal:** When clicked, you will be led to a window that will allow you to recalibrate your data based on known, certified data.
- iii. **Setup Tools:** When clicked, you will be led to a window that will allow you to edit various settings for your analyzer (See the Setup Tools section of this manual for information about these settings).

#### 6. Diagnostic Folder

- i. **Stop Instrument:** When clicked, you will be led to a window that will allow you to turn off the analyzer in an emergency event. Upon clicking on this icon, the following window will pop up. Please see **Shutdown Procedure** on page 30 of this manual to shut down the analyzer in normal circumstances.

**Figure 9:**  
Stop CRDS  
Software



CAUTION

---

**EXCEEDING GAS INLET PRESSURE OR TEMPERATURE SPECIFICATIONS COULD RESULT IN DAMAGE TO THE INSTRUMENT.** In the case of higher input pressure or flow, configuring a sampling bypass manifold system is recommended.

Use a 'tee' at the gas inlet and either return the remainder to the main gas stream or exhaust appropriately.

---



CAUTION

---

**Do not disconnect the AC power to the analyzer, vacuum line or the AC power to the External Vacuum Pump while analyzer is operating.** Damage may be caused by current surges if power is applied while attaching or removing cables.

---



CAUTION

---

Analyzers which include the external valve control option are provided with a cable consisting of five electrical connections intended for controlling solenoid valves (typically 12VDC <1A max). It is important to electrically isolate the solenoid valves from the analyzer's ground to avoid electrical interference which could compromise the analyzer's accuracy.

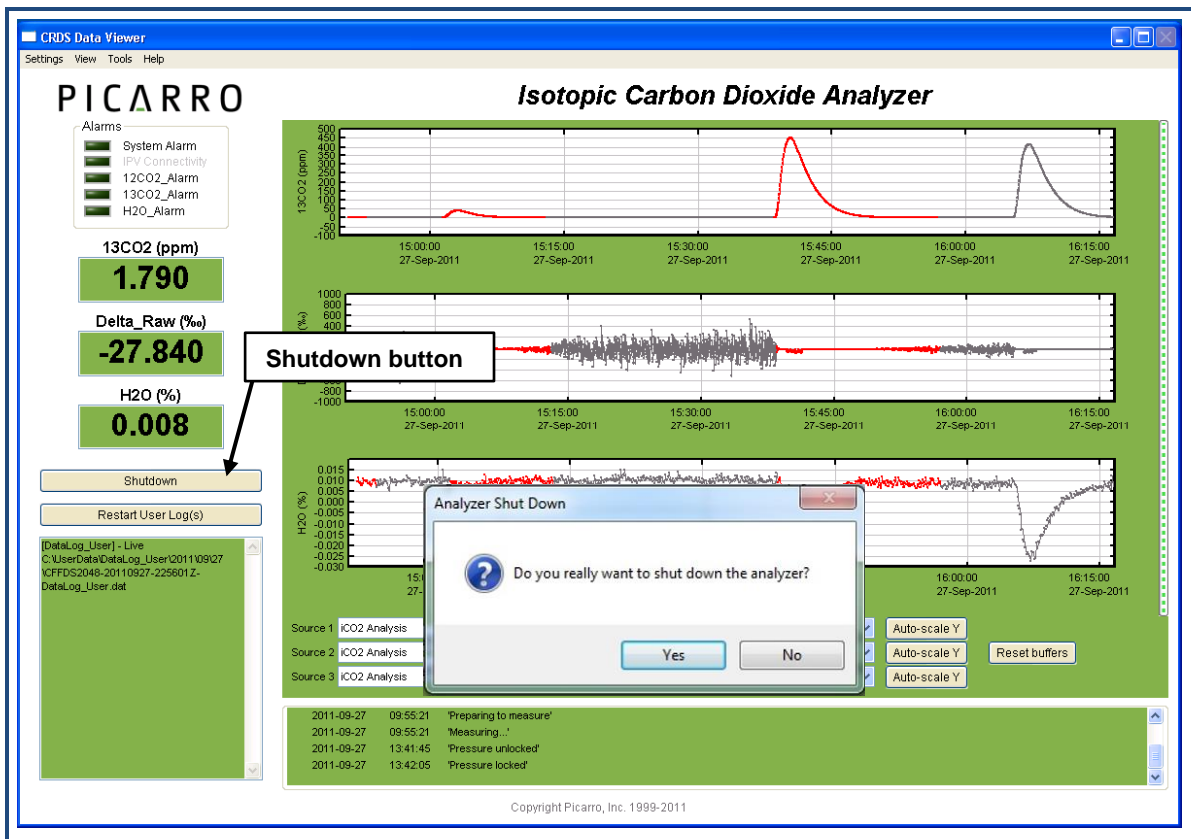
---

## 8.4 Shutdown Procedure

To shut down the analyzer using the GUI:

1. Click on the “Shutdown” button located on the left side of the Data Viewer window.
2. A window will pop-up prompting the user to confirm the shutdown. Once confirmed, the analyzer software and hardware will begin shutting down.
3. Once the hardware has completed shutdown, manually turn off the pump(s) and dry gas (only if your system requires it).

**Figure 10:**  
Shutdown Window



CAUTION

A flow of clean, dry gas should always be directed to the instrument for several minutes prior to shutting down. Trapping a high-moisture content gas sample in the cavity can cause condensation damage to the mirrors as the instrument cools from its operating temperature.





CAUTION

---

**Do not turn off the pump or disconnect the vacuum line while the instrument is operating.**

---



CAUTION

---

**FOR G2000 ANALYZERS: If you have trouble turning off the analyzer software, do not kill the process(es) in the task manager; rather, double-click on the "Stop Instrument" icon in the Diagnostics folder on your desktop.**

---

## 8.5 In case of an Electrical Power Outage

If the power to the analyzer is cut-off for any reason, the analyzer will cease operation. However, when the power is reapplied, the analyzer will restart automatically. The Picarro software tools will also properly close out previous files and open new files for data collection so that previously collected data, instrument diagnostics, and other parameters recorded up to the time of power outage are retained.

If short power outages will be a routine occurrence in your operating environment, Picarro recommends the use of an uninterrupted power supply to prevent damaging the hardware or software.

## 9. STATUS LOG MESSAGES

### 9.1 Normal Start-Up Messages

#### **Temperature Locked: WB (HB)**

The system waits for the warm box (“WB” – the temperature-controlled electronics and wavelength monitor chamber) to reach operating temperature. Similarly, the temperature of the hot box (“HB” – the temperature-controlled chamber containing the analyzer’s optical cavity and gas handling system) is stabilized. This is typically the longest step in the startup sequence. The duration of this step can range from 5 to 60 minutes, depending on the ambient temperature and how much time has elapsed since the last startup.

#### **Entering Measurement**

Spectral scanning has started. Concentration measurements will be available in approximately 30 seconds. The instrument will continue to scan and report concentration measurements until the instrument is shutdown using the procedure below.

#### **Pressure Stabilizing/Locked**

The valve control system begins to allow flow through the analyzer and stabilizes the pressure inside the cavity.

#### **Measuring**

This is the normal mode of operation after startup has completed.

# 10. LIST OF GUI FUNCTIONS

## 10.1 Additional Tools and Information

The Picarro analyzer GUI has useful features. See below for more information.

**Settings, view, tools, & help menus**

**Alarms Panel**

**Digital Readouts**

**Instrument Status**

**Shutdown**

**Stop User Log(s)**

**Data log filename and path**

**Data Source, Data Key, and Precision Pull down menus For data window content**

**Status log window**

**Axis Auto-scaling**

**Data Windows**

**Data buffer level meter**

**Reset data buffers**

**Layout of the Picarro analyzer GUI, G2000 series. The heading of the window may be different depending on the type of the analyzer.**

## 10.2 Settings, Tools and Help Menus:

### Settings Menu

Left clicking on the Settings menu pulls down a menu that has one entry 'Change GUI Mode from Standard to Service'. This is the access point to a password protected service mode where additional operational and measurement parameters are displayed. Selecting and clicking on this entry opens the Cavity Ring-Down Spectrometer Controller. This is reserved for Picarro service operators only.

## View Menu

This menu item has three entries:

1. Lock/Unlock time axis when zoomed: When locked, forces the two graphs to display the same time scale during zoom.
2. Show/hide statistics: Toggles the measurement statistics display, see 'Digital Readout' below.
3. Show/hide instrument status: Toggles the instruments status display. See 'Instrument Status', below.

## Tools Menu

This menu item has three entries:

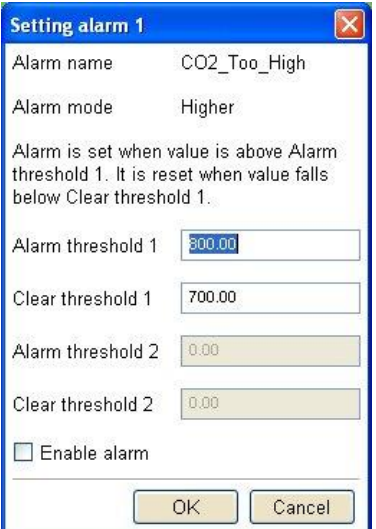
1. User Calibration: Opens the user calibration window (default password is "picarro"). The password can be reset in the QuickGui.ini file in the instrument directory: "C:\Picarro\G2000\AppConfig\Config\QuickGUI\" under the section:
2. [Authorization] UserCalPassword = Picarro Show/Hide Valve
3. Sequencer GUI: Toggles the display of the external valve sequencer window.

The calibration slope and intercept can be entered and their effects immediately seen in the data. Please refer to the section at the end of this manual concerning calibration.

## Help Menu

About Displays the version number of the instrument.

## Alarm Panel

	<p><b>Alarm Panel</b></p> <p>The panel in the upper left-hand corner of the GUI is used to monitor the status of the internal instrument alarms. These indicators are gas concentration alarms, such as “CO<sub>2</sub> Too High/Low” depending on instrument configuration. The gas concentration alarm LED’s are off (grayed) when the respective concentrations are below a certain value, and they are illuminated when the respective concentrations are above/below a certain value. To view the alarm set point, click on the LED and a dialog box will appear indicating the alarm setting and allow the user to enable it or change the setpoint:</p> <p>Type the value you wish to set the alarm to and press the “ok” button, or press “cancel” if you do not wish to change the alarm value. If you do nothing, the dialog box will disappear and the alarm value will remain unchanged.</p>
---	--

### 10.3 Digital Readouts

Displays the latest value recorded for the selected Data Key for each Data Window. Changing the Data Key changes the Digital Readout as well as changes the Data Window view. If the ‘Show Statistics’ entry is enabled in the ‘View’ menu, the mean, standard deviation and slope of the data in the graph is dynamically calculated and indicated below the digital concentration readout. These numbers change to reflect statistics of whatever data is in the data window.

### Start / Stop Data Log Button

The Analyzer automatically records all data collected on the instrument and saves it for later analysis. These files are called Data.dat files, which are described below in the section called “File Management”. In addition, the user can record a separate data log file. Press this button if you would like the instrument to start recording a separate data file. A dialog box will appear prompting you for a filename and location. Press this button again to stop recording the data file.

## 10.4 Data Log Filename and Path

The filename and path of the active data log is displayed in this pane. The indicator is grayed-out if there is no active data log (i.e., if a new data log has not been started using the *Start /Stop New Data Log Button*). A new file will be generated at midnight, which will be saved to the same location as the original log file.

## 10.5 Data Window

The data window displays a graph of any stream of data vs. system time, with a format of hh:mm:ss. The user can select which data stream are displayed using combinations from the Data Source and Data Key pull down menus. The precision displayed can be adjusted using the “Precision” menu and Auto-scaling of the ‘Y’ axis is also available.

## 10.6 Instrument Status

If these parameters are enabled through the ‘Show Instrument Status’ entry in the ‘View’ Menu on the main toolbar digital readouts for Warm Box temperature, Cavity Temperature and Cavity Pressure are displayed to the left of the main trend graphs.

## 10.7 Data Source and Data Key Pull Down Menus

These two menus enable selection of the data stream that is viewed in the *data window*. Data streams available on the GUI are gas concentrations, if ‘*instrument Analysis*’ (where *instrument* represents the system installed) is selected, or if “sensors” is selected, the analyzer’s optical cavity pressure or temperature can be viewed as well as the nominal ambient temperature of the analyzer (“DAS temp”) and the temperature of the analyzer’s electronics chamber, indicated as “warm chamber temp.”

## 10.8 Precision Pulldown Menu

Click on this icon to select the precision displayed on the y-axis, between 0 and 4 digits of precision or “auto”. The currently selected precision is displayed during operation. This does not affect the precision of the saved data in the data log files or results files.

## 10.9 Status Log Window

This window displays instrument status messages, in the following form: “MM/DD/YYYY hh:mm:ss generic message text.” These messages include all messages sent to the DAS front panel display.

## 10.10 Reset Data Buffer Button

Press this button to clear the internal data buffer of the GUI (this clears the current data traces from the graphs). This has the effect of clearing all data in the data window. Pressing this button has no effect on any of the data log files stored by the instrument.

## 10.11 Data Buffer Level Meter

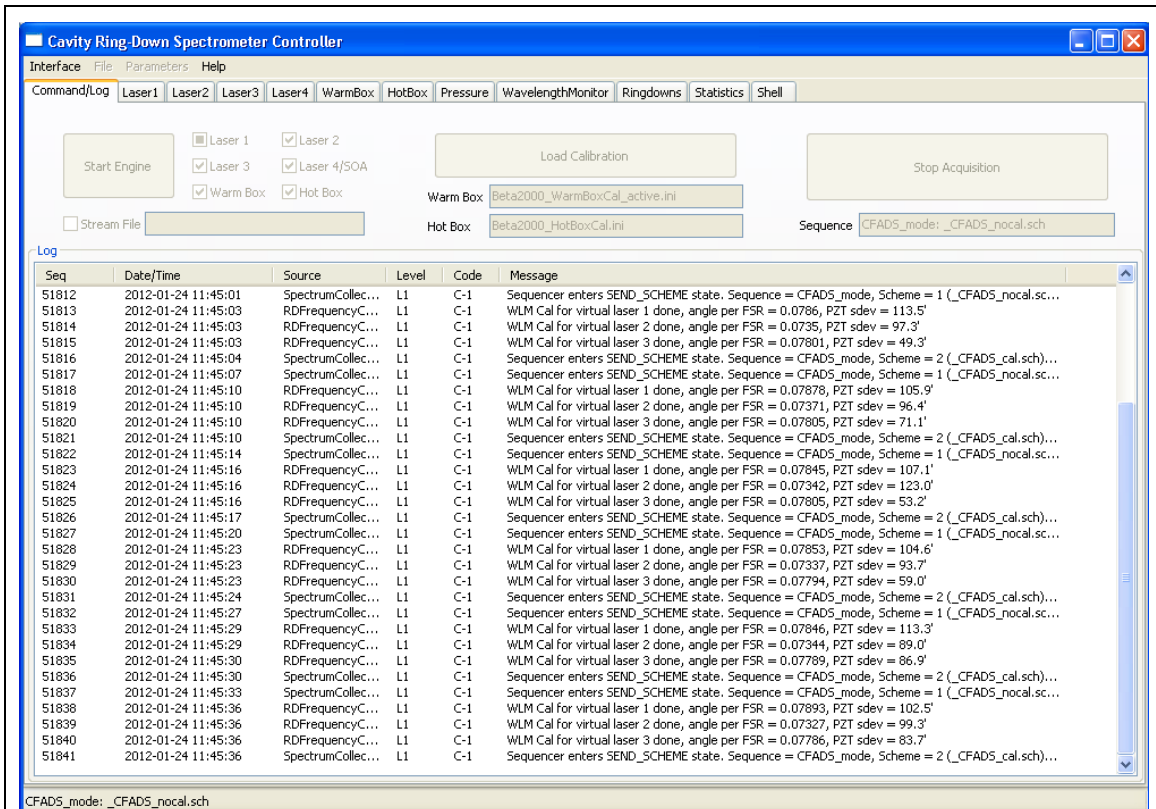
The meter to the right of the *Data Window* indicates how much of the internal memory of the GUI is used to retain historical data collected with the instrument. There is an internal limit of a finite number of points. Once that number of data points is collected, the buffer is full, and old data is removed from the buffer as new data is collected. This buffer affects *only* the data displayed in the *data window*, not the data stored in any files. This buffer is empty upon instrument startup, and can also be emptied by pressing the *reset data buffer button* in the lower-right-hand corner of the GUI.

## 10.12 Graph Zooming

To zoom the graph, simply drag the magnifying glass over the section to be zoomed and click and hold the left mouse button. While holding down the left button, move the mouse to create a box that covers the region of interest. When the box is properly drawn, release the left button and boxed area will automatically scale to fill the data window. To zoom back out, double click on the left button. To autoscale the y-axis of either graph, use the autoscale buttons below the graph. To lock or unlock the time axes of each graph during zooming, select that menu item in the ‘View’ menu.

## 10.14 Cavity Ring-Down Spectrometer Controller

On your desktop, there is an icon labeled “Picarro Controller.” This is reserved for Picarro service operators only. Clicking on this icon will open up a useful diagnostics panel (see image below), allowing the user to see the analyzer’s internal temperatures, pressure, and spectroscopy in real time. This program has user-accessible functions, but cannot change anything related to analyzer functionality and is intended for diagnostics purposes only.



**Cavity Ring-Down Spectrometer Controller Window**



## 11. FILE MANAGEMENT

### 11.1 Overview

During operation, the analyzer generates ASCII format text output file that is updated after each batch of concentration measurement is complete.

During operation, the analyzer also creates directories to store the data, based on the date the data was acquired. After each data file has been closed, it is moved to an archive directory, and a new file is started in the original location. To keep the data files easy to manage and to limit the size of individual files and directories, please see “Setup Tools” in the “Utilities” folder on your desktop to modify various aspects of data storage.

There are two data directories – **UserData** and **Archived Data**. UserData directory contains the current and recent data. Archived Data directory contains the past data.

### 11.2 User Data

1. **UserData** Directory contains two types of data: DataLog\_User and DataLog\_User\_Sync (Sync data is only useful for Flux G2311-f analyzers).
  - **DataLog\_User**: Is the current data that is stored as measurements are made.
    - **Location**: C:\UserData\DataLog\_User\Year\Month\Day:
    - **Naming Convention**: See example below.
      - CFHADS2007-20111222-000131-DataLog\_User.dat
      - CFHADS: Instrument Serial Number
      - 20111222: Year, Month, date of when file was started.
      - 000131: Hour, Minute, second of when file was started (Using a 24 hour clock).

- **DataLog\_User\_Sync:** Is the same data as the DataLog\_User, except that data is evenly spaced in time (0.1 s interval). This type data is only available when measured in Flux mode, and is useful only for Flux G2311-f analyzers.
  - **Location:**  
C:\UserData\DataLog\_User\_Sync\Year\Month\Day
  - **Naming Convention:** See example below.
    - CFHADS2007-20111222-000131-DataLog\_User\_Sync.dat
    - Explanations are as same as the above.

## 11.3 Archived Data

**Archived\_Data** Directory contains two types of data: DataLog\_User\_Backup and DataLog\_Private.

- **DataLog\_User\_Backup:** Is the archived, older data that is stored in compressed zip format.
  - **Location:**  
C:\Picarro\G2000\Log\Archive\DataLog\_User\_Backup\Year\Month\Day
  - **Naming Convention:** See example below.
    - DataLog\_User\_Backup\_20111107\_005427.zip
    - 20111107: Year, Month, data when the file was started.
    - 005427: Hour, Minute, second of when file was started (Using a 24 hour clock).

**DataLog\_Private:** This is a complete data file which includes additional information beyond the concentration data including parameters such as instrument temperatures and pressure, set-points, and spectroscopic information. This information is generally not useful to the user, but it can be useful for diagnostic purposes. For more information, please contact Picarro.

**Location:** C:\Picarro\G2000\Log\Archive\DataLog\_Private\Year\Month\Day

## 11.4 File Archival and Automatic Deletion of Old Files

### File Management

The analyzer can automatically compress (zip) and archive old files as mentioned above. This operation is controlled by the ini file:

C:\Picarro\G2000\AppConfig\Config\Archiver\Archiver.ini. For each file type, there are various items along with some recommended default settings which may vary by file type:

- **Directory** = C:/UserData/DataLog\_Sync  
Optionally specifies which directory to find files to archive.
- **MaxCount** = -1  
Specifies how many files to keep. A setting of -1 indicates that there is no maximum number of files. Generally -1 is used in conjunction with a maximum size limit, below.
- **MaxSize\_MB** = 1500  
Specifies that a maximum of 1.5 GB of data is to be kept before the system begins to delete old data.
- **Compress** = True/False  
Specifies if archived files are to be zipped – recommended setting is true to save hard drive space. True means files are zipped, false means files are not zipped.
- **AggregationCount** = 0  
If compression is set to TRUE, specifies how many files to be included in each zip archive.
- **StorageMode** = FIFO  
First in first out. Specifies that old data is deleted first.
- **Quantum** = 4  
Generally should not be changed. Specifies the files be sorted by year\month\day\hour in the archived directory structure.

In addition to the automatic file and directory management described above, the analyzer also automatically deletes various files specified in C:\Picarro\G2000\AppConfig\Config\FileEraser\FileEraser.ini. There are various settings, as described below:

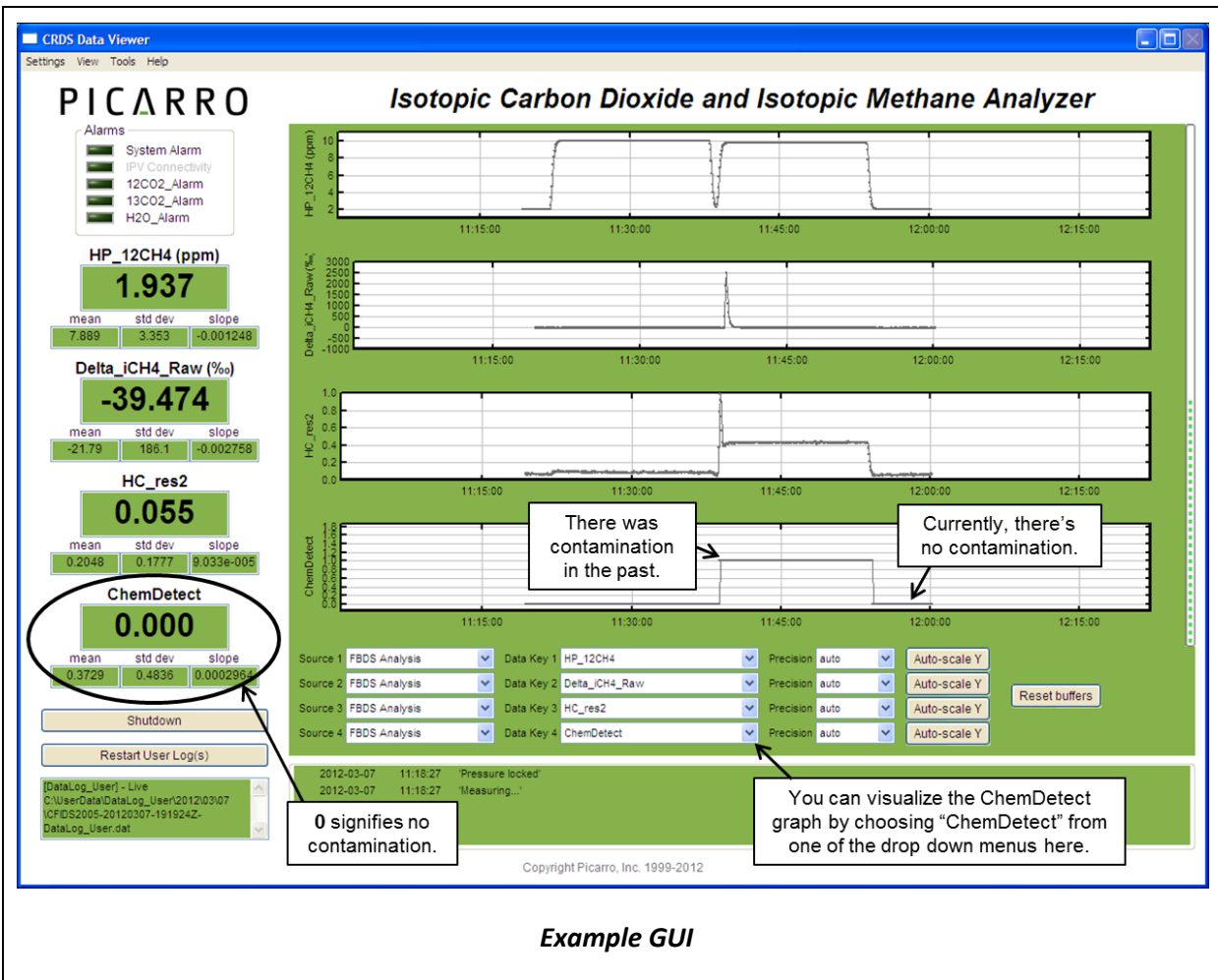
- **runtime\_interval\_hrs** = 0.5  
Specifies how often (in hours) to run the file eraser.

- **path** = ../../../Log/Archive/DataLog\_Private  
Specifies which directory to look in for files to delete.
- **extension** = dat  
Specifies which files having what extension are to be deleted. If empty, it deletes all files.
- **delete\_time\_hrs** = 48  
Specifies how long to keep files prior to deletion.

## 11.5 ChemDetect Software

All of Picarro's iso-methane analyzers are equipped with Picarro's ChemDetect software. This software looks for distortions in the absorption spectrum, allowing automatic and immediate detection of sample contamination from interference gas molecules including Ammonium, Hydrogen Sulfide, Ethane, Ethylene, and Butane. The software is always on while the analyzer is running, and has been calibrated for each instrument at Picarro. No action from the customer is required to activate or to recalibrate the software.

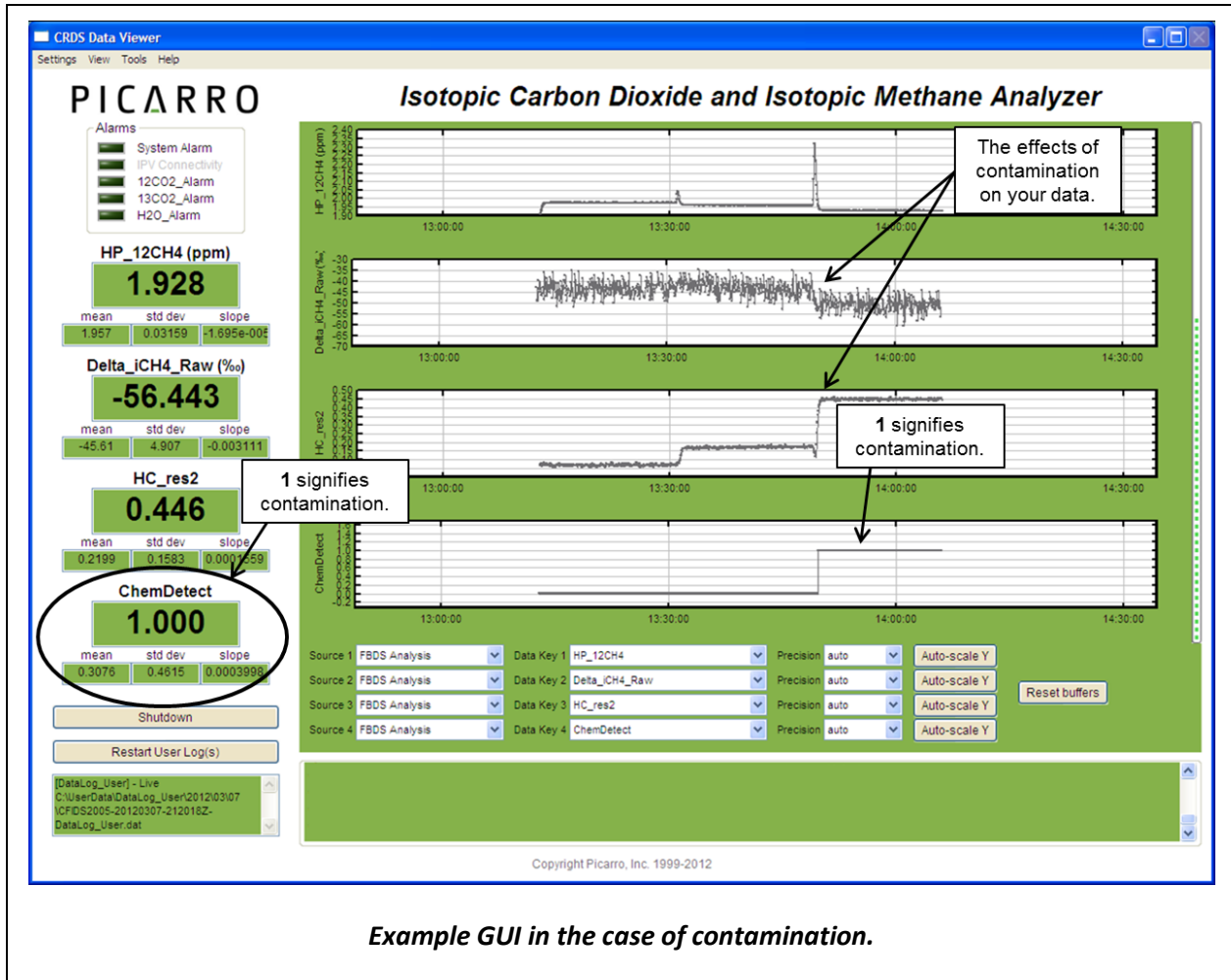
ChemDetect value can either be **0(no contamination)** or **1(contamination)**. The current ChemDetect data can be visualized from the main Graphic User Interface (see images below). The old ChemDetect data are automatically archived as one of the data columns in all the archived data files.



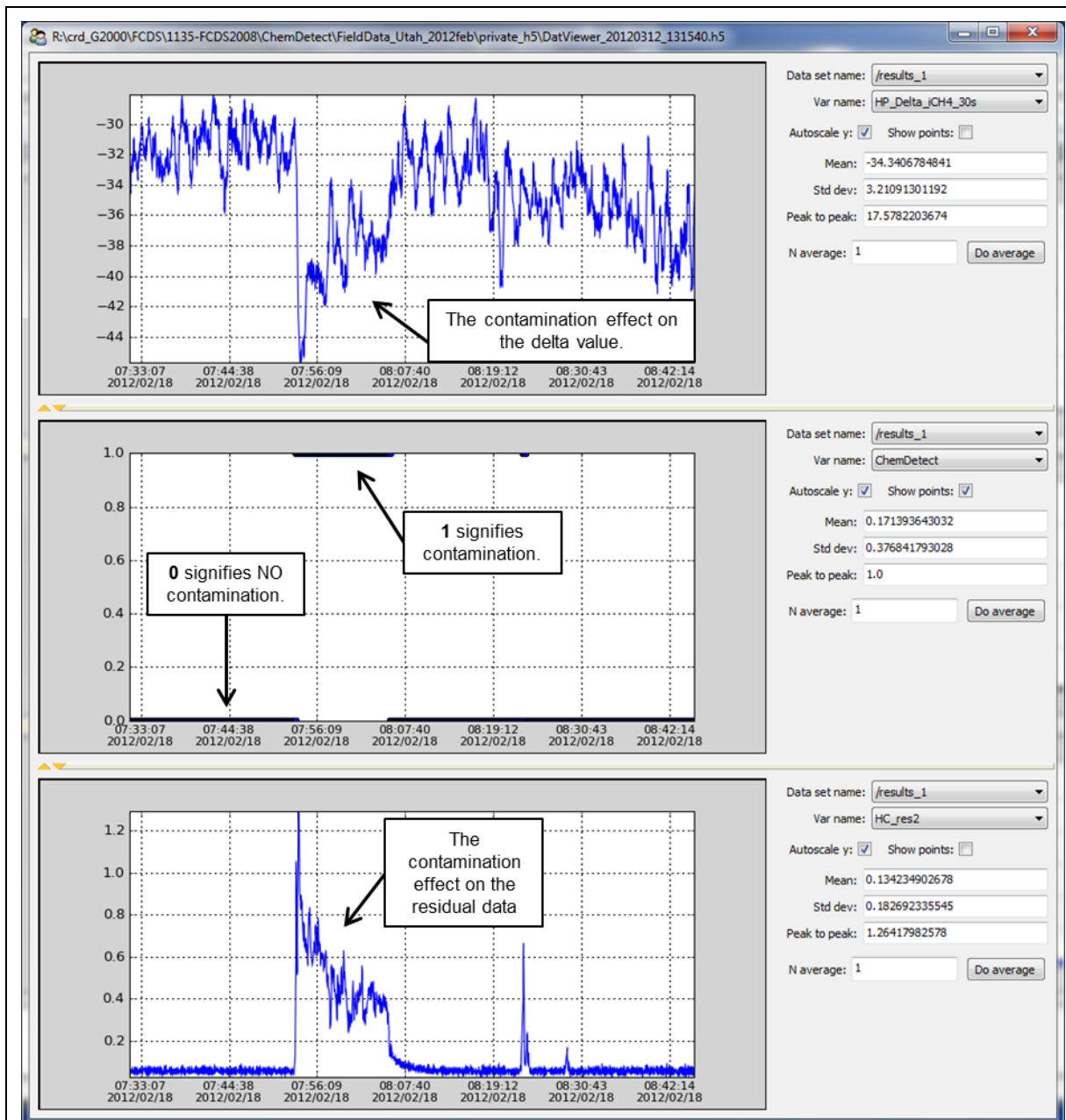
**Example GUI**

In the event of ChemDetect being triggered, save data and then contact Picarro for support if you have any questions ([support@picarro.com](mailto:support@picarro.com)). Two important data to save are the **RDF** and **DataLog\_Private** files, which can all be found in the **C:\Picarro\G2000\Log\Archive** directory. RDF files are useful for its ability to show residual data, which can be analyzed by Picarro for the source of contamination. RDF files are large (on average 1GB/day), however, and it has been factory set to be deleted frequently from the archived data directory. You can change the maximum RDF file size saved by editing the \*.ini file below. In this file, go to the RDF section, and then modify the **MaxSize\_MB** (default is 20GB). It is important to regularly check for free disk space and to back up your data.

**C:\Picarro\G2000\AppConfig\Config\Archiver\Archiver.ini.**



ChemDetect data has its own column named “ChemDetect” in all the archived data files. There are two types of archived data: **DataLog\_User\_Backup** and **DataLog\_Private\_Text**. There is another document type called **DataLog\_Private**, which holds the same information as the DataLog\_Private\_Text, but is in \*.h5 format which is smaller in size. All these documents can be found in the **C:\Picarro\G2000\Log\Archive** directory. One good way to visualize ChemDetect data, especially the \*.h5 format documents, is with the Data File Viewer program. This software can be found in the “Picarro utilities” folder in the desktop. This program allows you to open h5 files, convert h5 files to \*.dat files (also \*.dat to h5), as well as to do batch conversions. With this program, multiple h5 files can be concatenated and then viewed as graphs. In the graph window of the software, you can select to view any of the data columns in the data file, and then autoscale, zoom, hide/show points, and calculate statistics of data. See below for more information.



**The Data file viewer is a great software for viewing ChemDetect data. The above shows the ChemDetect, residual, and delta data from the same sample source plotted against time.**

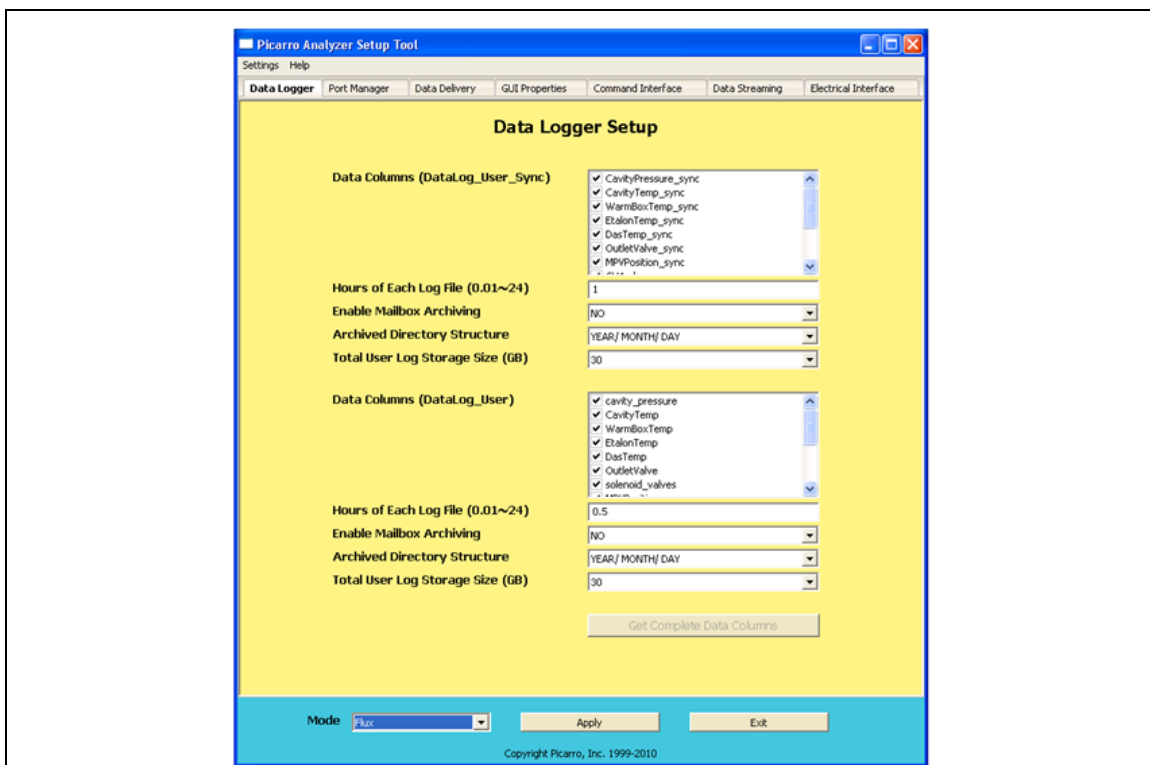
## 11.7 SETUP TOOL

In the desktop folder called Picarro Utilities, the Setup Tool can be launched by double clicking on its icon. The tool allows the user to configure data file saving details, including which data elements are written to data files, digital data output (via serial port or TCP/IP), remote data delivery (via email), and general GUI properties.

Seven tabs of the Setup Tool Window are explained in the next pages. If you have any questions about the Setup tool, please contact Picarro or refer to Picarro Community for further details.

<https://www.picarro.com/support/community>

### Configuring Data File Saving Details



The **DATA LOGGER** tab allows the user to configure various data file saving details, including which data elements are written to data files.

**Data Columns:** Controls which data elements are written to data files.

**Hours of Each Log File:** Controls the size of each data document.

**Enable Mailbox Archiving:** Enables archiving of data in the mailbox folder – C:\Picarro\G2000\Log\Archive\DataLog\_Mailbox

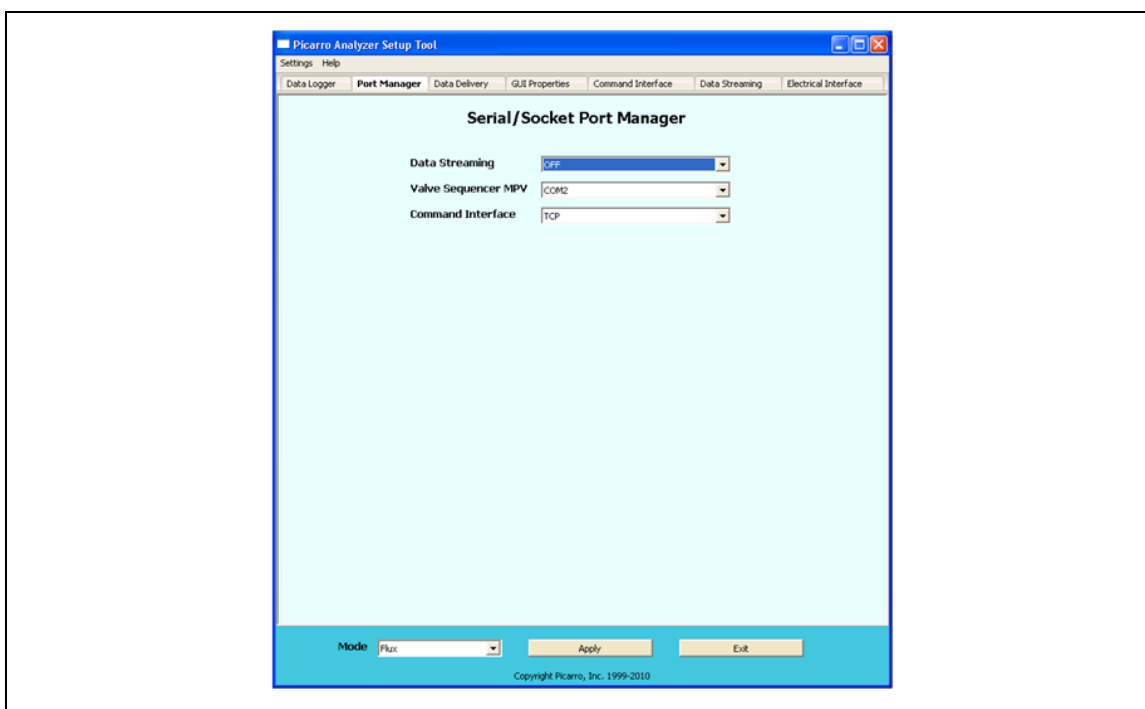
**Archived Directory Structure:** Specifies part of naming convention for data documents.

**Total User Log Storage Size (GB):** Specifies the size of storage allowed for User Data (Recent Data).

After making the appropriate edits, click “Apply” to put changes into effect and then “Exit” to close the window.



## Managing Ports for Digital Data Output/Input and Serial Communication



The **PORT MANAGER** tab allows you to control digital data output/Input via serial port or TCP/IP.

On this window, specify the port you want your data to stream through (COM1/COM2/ Off), the port you want to connect your Valve Sequencer to (COM1/COM2/Off), and/or your desired Command Interface (COM1/COM2/ TCP/Off).

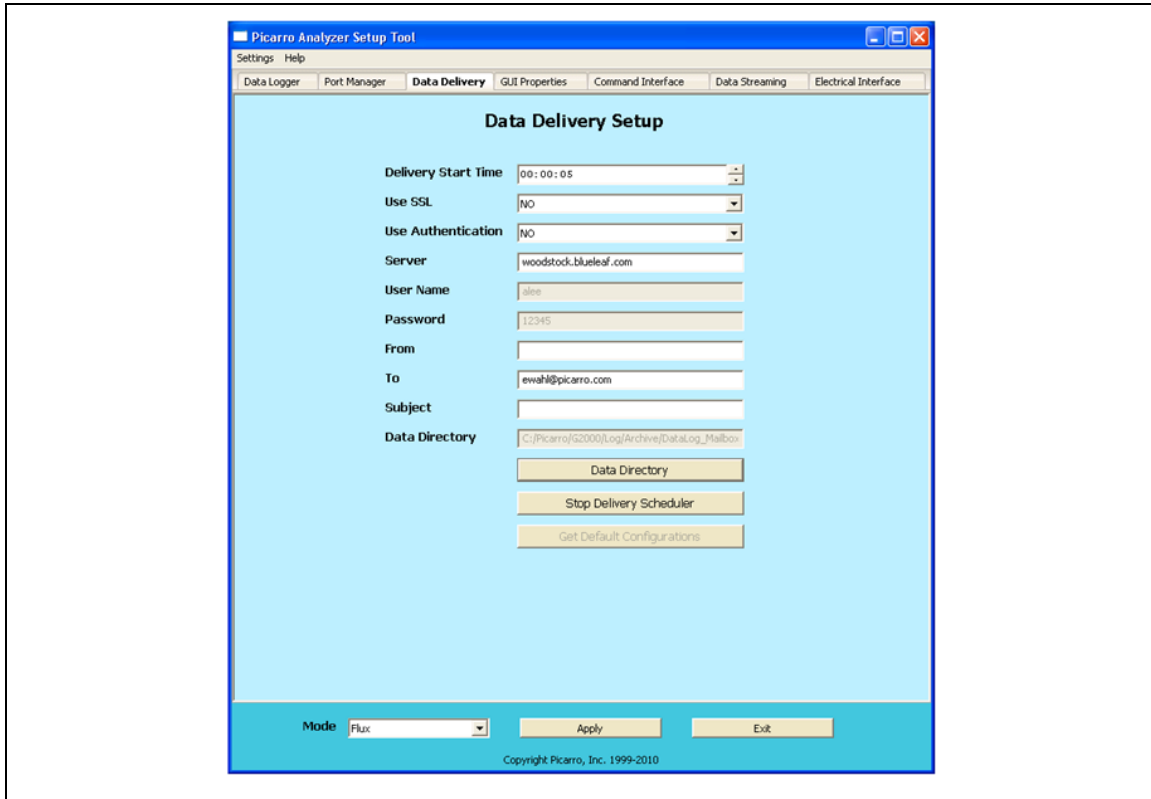
Make sure there are no COM port conflicts before clicking “Apply.”

After making the appropriate edits, click “Apply” to put changes into effect and then “Exit” to close the window.

See below to learn more about Serial Communication in Picarro Analyzer, and also see “External Valve Sequencer” section of this manual to learn more about valve sequencer.

**SERIAL COMMUNICATION:** The analyzer supports an RS-232 physical command interface, which can be used to control the instrument and to retrieve concentration data. Not all features of the instrument are available on the serial interface. For details on how to use the serial command interface, please see the Programming Guide (included in pdf format on the installation CD). This command set may also be used across a TCP/IP interface through an Ethernet connection.

## Scheduling Remote Data Delivery (Email)



The **DATA DELIVERY** tab allows the user to schedule remote data delivery (email).

**Delivery Start Time:** Time of the day when data will be sent.

**SSL:** Depending on the sender's email server, the sender can activate the Secure Sockets Layer (SSL).

**Use Authentication:** Turning this on will require the receiver to provide a password and a username to access data. Set up the **password** and **Username** from this window.

**From:** Sender's email

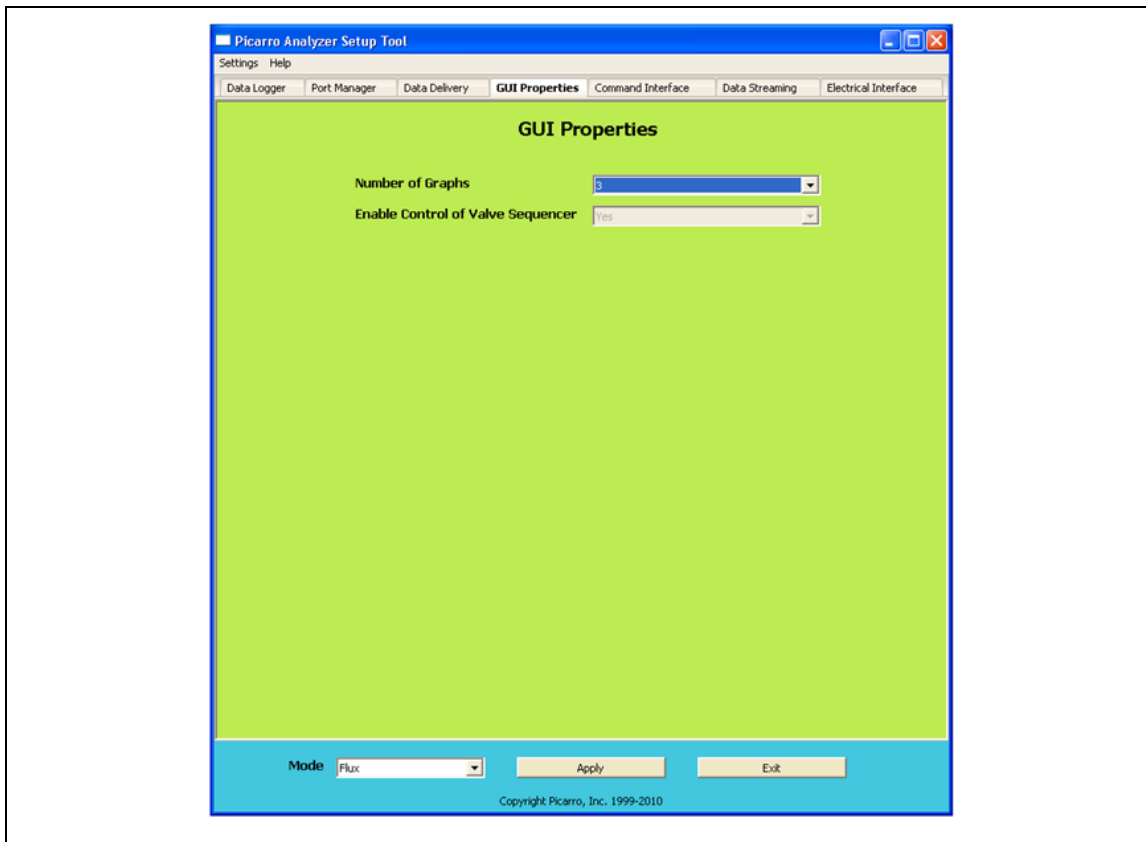
**To:** Receiver's email.

**Subject:** subject line of the email.

**Data Directory:** Location of the data you want email.

After making the appropriate edits, click "Apply" to put changes into effect and then "Exit" to close the window.

## Editing Main GUI Properties



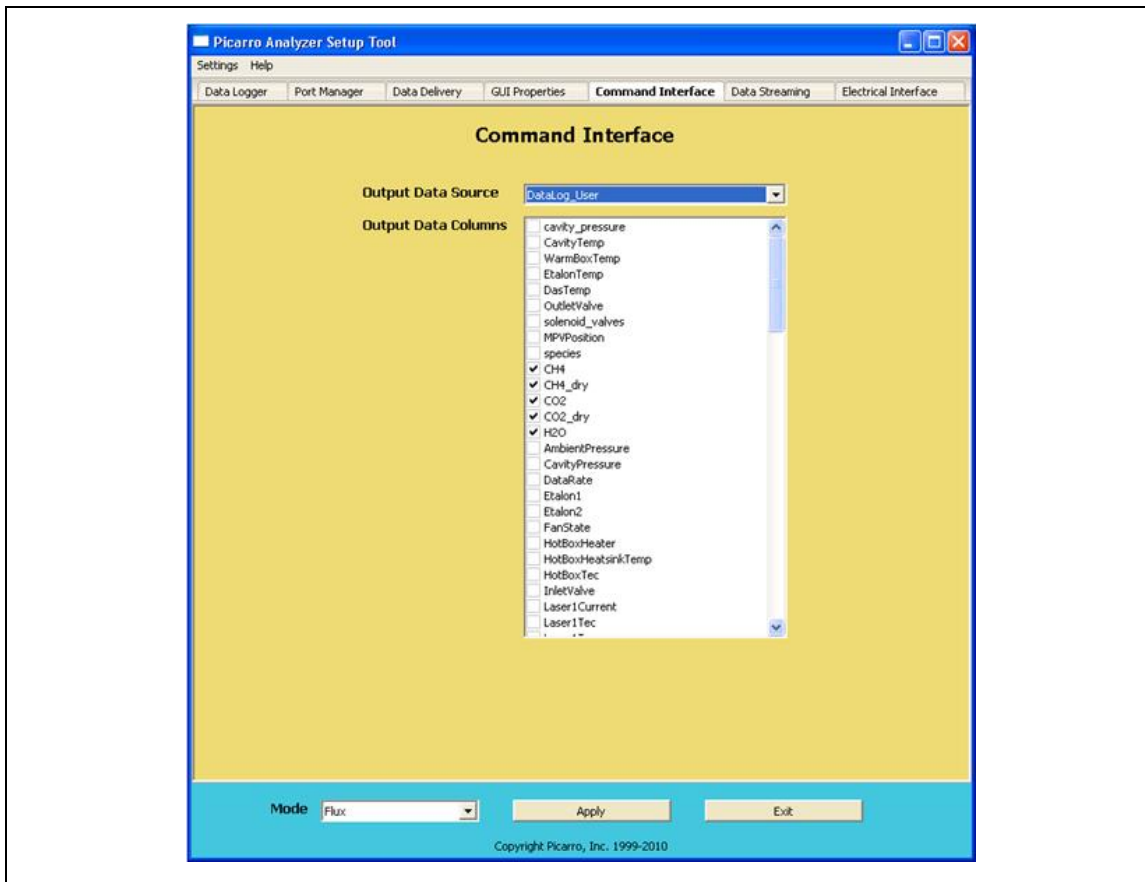
The **GUI PROPERTIES** tab allows you to set the number of line graphs visible on the main GUI. It also allows you to enable the control of Valve Sequencer from the main GUI.

To make the Valve Sequencer menu item visible under the “Tools” menu of the main GUI:

1. Click on “Settings” of the “Setup Tool” window, and then “Switch to Service” mode.
2. Choose “Yes” next to “Enable Control Valve Sequencer” drop down menu on the “GUI Properties” tab.
3. Click “Apply” to put changes into effect and then “Exit” to close the window.

You should now be able to access the “Show/Hide Valve Sequencer GUI” menu from the main GUI under “Tools”

## Specifying Digital Data Output for Command Interface

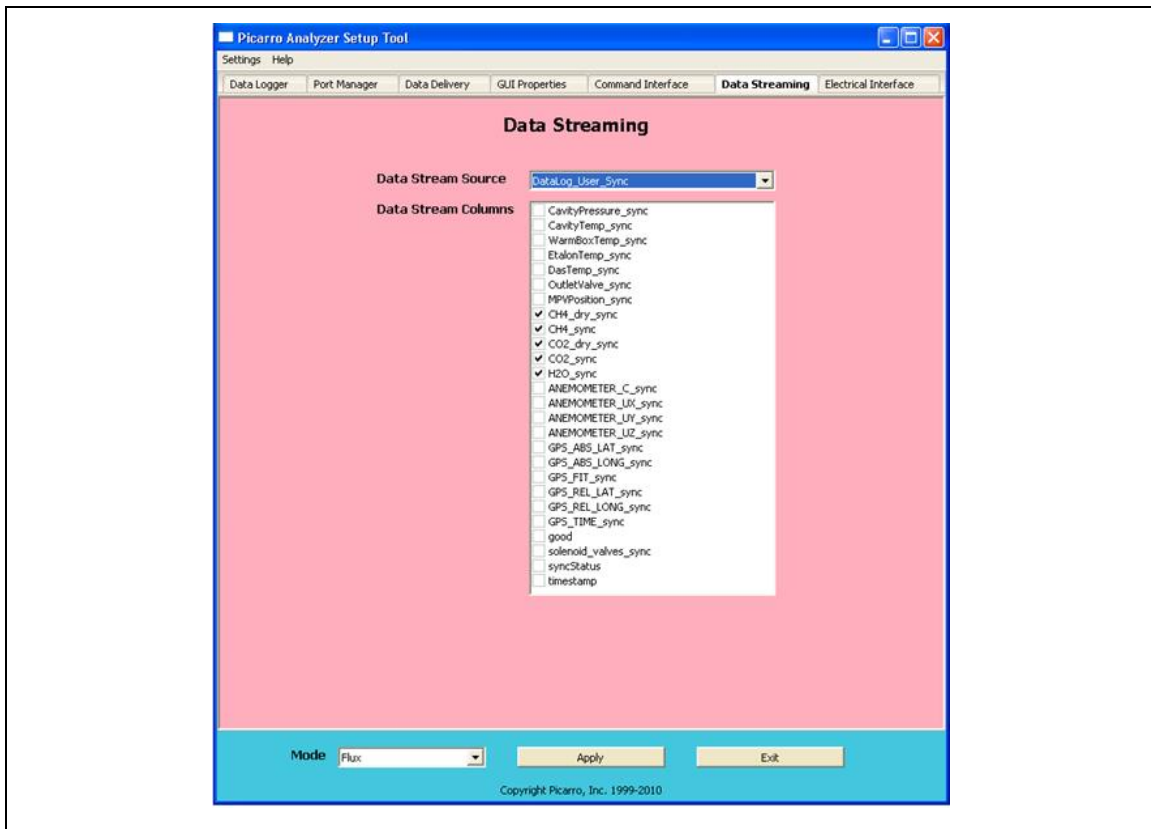


The **COMMAND INTERFACE** tab allows you to specify the data elements that are sent via COM port/TCP (specified in the PORT MANAGER tab). Two types of data can be specified here: Datalog\_User and DataLog\_User\_Sync (Relevant only for Flux G2311-f analyzers).

To output data, the Command Interface needs to be sent commands to.

After making the appropriate edits, click “Apply” to put changes into effect and then “Exit” to close the window.

## Specifying Digital Data Output For Data Streaming

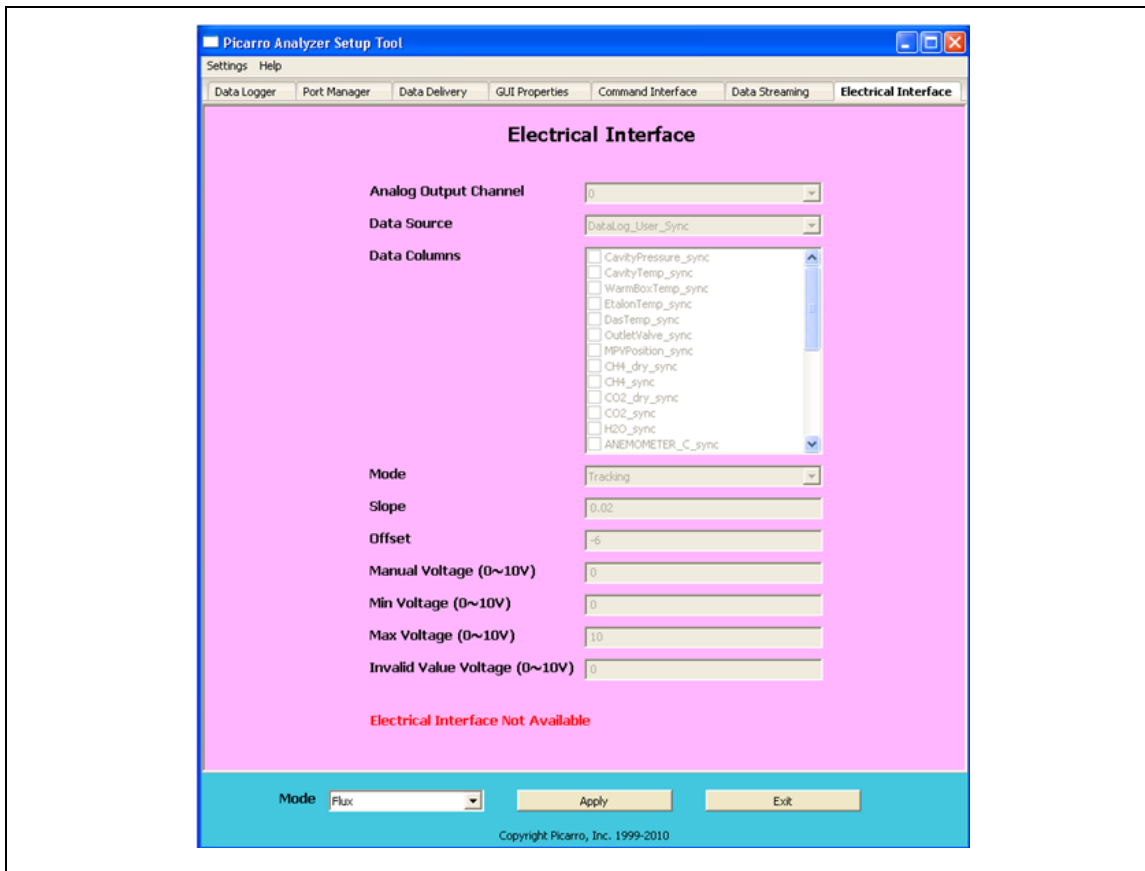


The **DATA STREAMING** tab allows you to specify the data elements that you want to send via COM port (specified from the PORT MANAGER tab). Two types of data can be specified here: Datalog\_User and DataLog\_User\_Sync (Relevant only for Flux G2311-f analyzers).

Data Streaming outputs data continuously, whereas the Command Interface needs commands to output data.

After making the appropriate edits, click “Apply” to put changes into effect and then “Exit” to close the window.

## Customizing Analog Output Channels



The Picarro analyzer may be optionally configured with an Electrical Interface Card (EIC) that provides up to 8 analog signals available to the user for monitoring various measurements results and analyzer parameters.

The **ELECTRICAL INTERFACE** tab allows you to customize each analog output channel.

After making the appropriate edits, click “Apply” to put changes into effect and then “Exit” to close the window.

This tab will be disabled if your analyzer was not configured to work with an analog peripheral.

## 12. CALIBRATION

You can use either of the methods below to calibrate your analyzer. **Method 1** requires you to make a graph (known standards versus measured standards) to calibrate the analyzer. **Method 2** does not require you to make any graph, however the effect of its calibration is harder to reverse in comparison to Method 1.

### 12.1 Method 1: Using the GUI to Calibrate

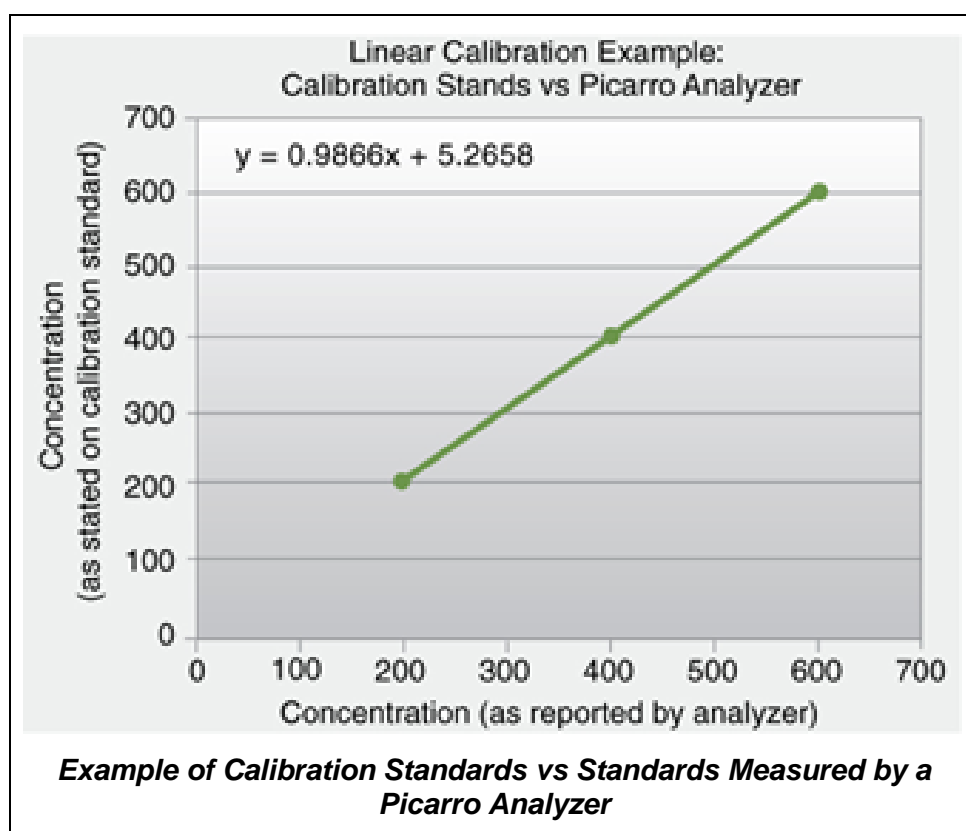
Since the Picarro Analyzer is extremely linear, it is only necessary to use three calibration standards to calibrate each gas or isotopic species (two points define the calibration line and a third intermediate point is used for verification). The exact value of each calibration standard is not of particular importance as long as they span a representative range of values over which the analyzer will typically be operated. It is reasonable to use a concentration of zero for the low calibration value, for example. Although it is not necessary to use more than three standards, additional standards can be used to further constrain the linear calibration coefficients.

To perform a calibration or verification of calibration, the user simply introduces the first calibration standard into the analyzer for an interval long enough for the analyzer to yield a stable measurement of that sample. The stated concentration of the calibration sample (a calibrated gas bottle, for example) and the value the analyzer reads for that sample are recorded for each calibration standard used. These values can then be plotted, as shown below, in a spreadsheet, for example, to determine the linear relationship between the known calibration values and the analyzer's reported values. A linear best-fit equation can be calculated from the data. It is important to plot the analyzer's reported concentration on the horizontal axis and the gas standards' stated concentrations on the vertical axis. The slope and intercept of the best-fit line through these points are the two values that are used to calibrate the analyzer. By determining what the linear relationship is between the known calibration values and the analyzer's reported concentration values in this way, a calibration offset (slope and intercept) can be calculated so as to add a correction term to the analyzer's factory or previous calibration.

Changing the analyzer's calibration is intended to be done infrequently. Instead of recalibrating frequently to increase the accuracy of the data, users often just verify the calibration by measuring three or more gas standards and use the same regression procedure described here to calculate an offset by which to correct their data offline.

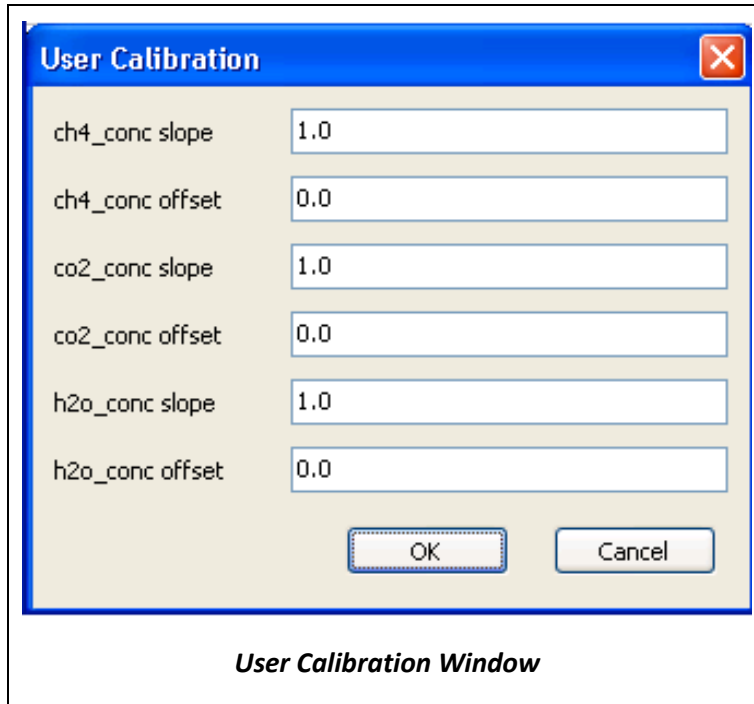
Using the equation in the graph below, this would be accomplished point-by-point by calculating the corrected data “y” by using the analyzer’s data “x” so that:  $\text{Data}_{\text{corrected}} = 0.9866 \cdot \text{Data}_{\text{raw}} + 5.268$ .

	Value Given by Analyzer	Value of Calibration Standard
Calibration Point #1	200.1	202.7
Calibration Point #2	600.3	597.6
Calibration Point #3	400.0	400.0



Calibration values are input into the software by selecting the “User Calibration” from the Tools menu and entering the slope and intercept for each species. This is a password-protected function, with the default password “picarro” and can be changed by modifying an \*.ini file as previously described.



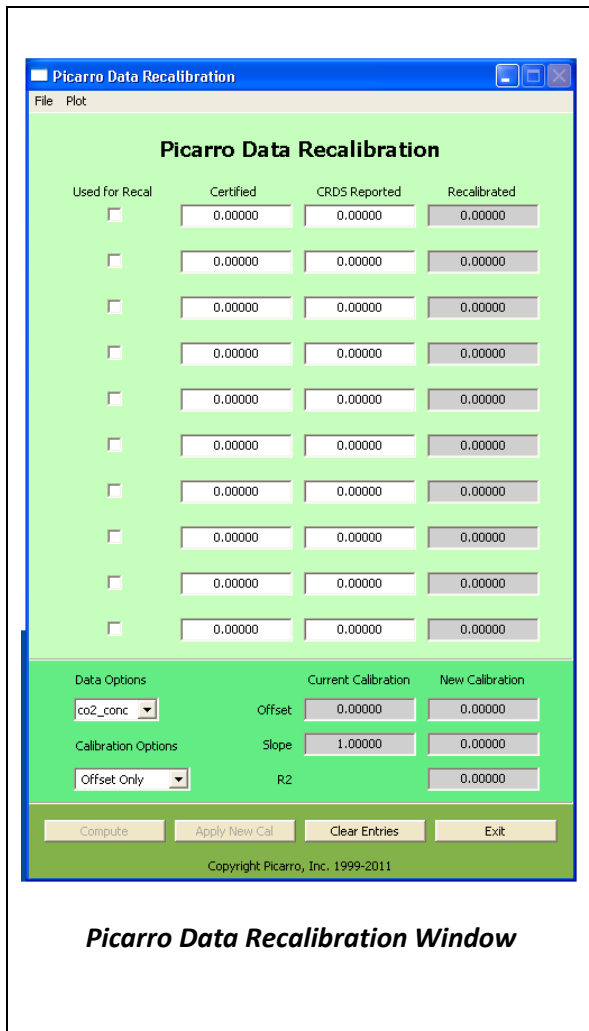


After the calibration is entered, it will take effect immediately after clicking “OK.”

To return to the factory calibration, simply set the slope to 1 and the intercept to 0 for each species.

## 12.2 Method 2: Using the “Picarro Data Recalibration Tool” to Calibrate

This tool can be used after you have performed the calibration measurements of standards with your Picarro analyzer.

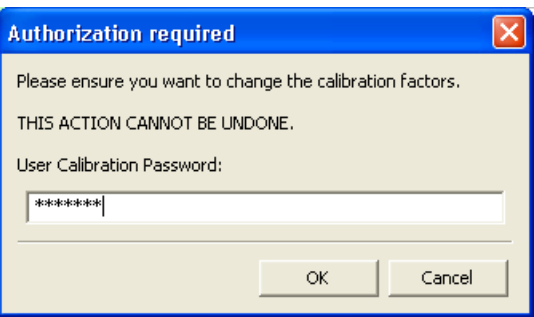
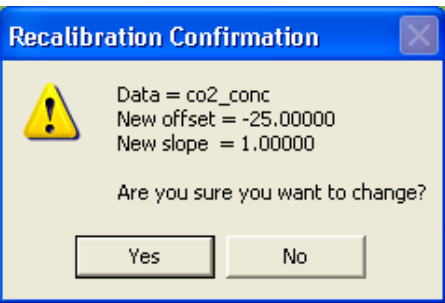
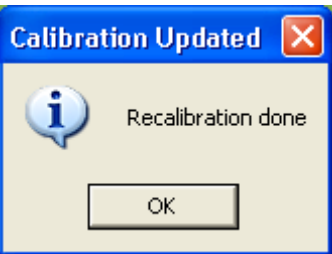
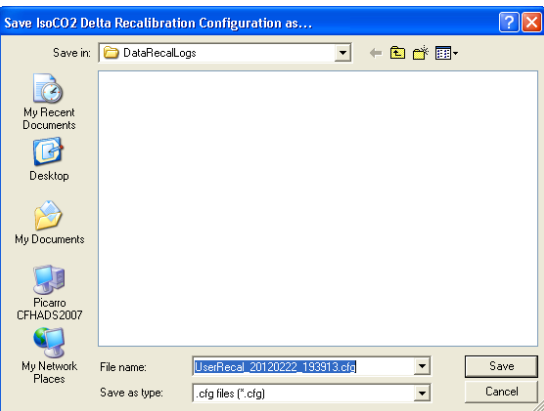


The Picarro Data Recalibration (“Data Recal”) software can be found in the “Picarro Utilities” folder in the desktop, and it can be used to recalibrate the data analyzed by Picarro analyzers.

In the screen shot on the left, “Certified” is the expected ppm measurement, “CRDS Reported” is the ppm measured by a Picarro analyzer, and “Recalibrated” is the ppm recalculated by the software. This recalculation is based on which horizontal row/s of data you choose to check in the “Used for Recal” column.

**Direction: Step 1:** Open the window on the left, and click on “Clear Entries” to reset the values in the “Picarro Data Recalibration” window.

**Step 2:** type in the “Certified” and the “CRDS Reported” data values. Check the row/s (in the “Used for Recal” column) that you want the software to base the calibration on. Click on the “Compute” button. The recalibrated values will appear in the right most column. Click “Apply New Cal” if you want to apply the calibration to your future measurements.

	<p>After clicking on “Apply New Cal” in the previous window, the window on the left will pop up. The default user Calibration Password is “Picarro.” Click “OK” to continue. <b>Take note that this action cannot be undone from the “Picarro Data Recalibration Window,” but it CAN be undone from the “User Calibration” window from METHOD1.</b></p>
	<p>Upon clicking “OK” in the previous window, the window on the left will pop up. Review the values in the window, and click “YES” to confirm.</p>
	<p>Upon clicking “YES” in the previous window, the following window will pop up. Click “OK” to continue.</p>
	<p>Upon clicking “OK,” you will be given an option to save your calibration setting. Click “Cancel” if you don’t want to save your new calibration setting.</p> <p>You have now calibrated your analyzer. The next time you do any sample measurement, the measurements will be based on the new calibration setting.</p>

## 13. TROUBLESHOOTING

The following section lists problems that may be encountered during installation and operation of the analyzer. The corresponding step-by-step procedures provide resolution in most cases. If, after attempting these procedures, the problem remains unresolved, contact Picarro support as noted at the beginning of this manual.

### 13.1 Power LED on Analyzer Does Not Illuminate

Context: Turning on the analyzer by momentarily depressing its front panel power switch should apply power. The green power LED is illuminated when it detects the correct power levels.

1. Check that the AC power cord is attached and plugged into a working outlet.
2. Check that the rear on-off switch near the AC power cord is in the on position.
3. Press and hold the front panel power switch for at least 5 seconds as the analyzer may take several seconds to respond.

### 13.2 User Interface Program Does Not Start

Context: The computer may be configured to start the instrument and the associated user interface program automatically after it completes its boot-up sequence, or the program may be launched using the “Start instrument” icon on the desktop.

Communications problems with the analyzer may occur if the analyzer fails to initialize correctly on power up. Should the analyzer initialization process not complete correctly, shut down the instrument by shutting down the Windows operating system on the control computer:

1. Using the Start menu, select the red Shut Down button and select “Shut down” in the drop-down box under “What do you want the computer to do?” Wait for the shutdown to complete normally and for the computer and analyzer to turn off completely.
2. After a few seconds, restart the computer by momentarily depressing the power button.



---

**NOTE:** Do not simply restart Windows since this does not cycle the power to the analyzer.

---

### 13.3 Sample Pressure Cannot Be Controlled to Appropriate Value for Concentration Measurements

Context: Under normal operation, the cavity pressure is automatically locked to the correct value by means of electronically controlled inlet and outlet valves. The message “Pressure Locked” on the front panel display and the user interface indicates that the cavity pressure is at the appropriate value. Should either of the messages “Pressure high” or “Pressure low” be displayed, the cavity pressure is out of its correct operating range.

1. The “Pressure low” message indicates that there is insufficient gas available at the inlet of the analyzer. Check the inlet plumbing to the analyzer and ensure that the pressure at the inlet is within the specifications.
2. The “Pressure high” message indicates that gas cannot be removed from the analyzer at a sufficient rate. Check the vacuum line between the analyzer and the power vacuum unit for leaks. Failure of the vacuum pump, injecting dilution gas at excessive pressure, or excessive pressure at the inlet can also cause this problem.

### 13.4 User Interface Program “Freezes”/Won’t Update Graphs as Data Are Collected

Context: The computer may become unresponsive causing the programs that control the analyzer to stop functioning. The computer and analyzer should be shut down and restarted.

1. Re-setting the computer and the instrument requires that the computer be shut down and restarted. If the computer responds to the mouse, a normal Windows shutdown may be carried out: use the Start menu, select the red Shut down button and select “Shut down” in the drop-down box under “What do you want the computer to do?” Wait for the shutdown to complete normally and for the computer and analyzer to turn off completely. After a few seconds, restart the computer by momentarily depressing the power button.
2. If the computer does not respond to the mouse, hold down the power switch on the front panel for a few seconds until the computer and the instrument turn off. After another few seconds, restart the analyzer by momentarily depressing the power button.

## 14. SERVICE AND MAINTENANCE

The advanced, rugged design of the Picarro Analyzers provides stable, long-term operation with minimal service or maintenance. With the exception of the particulate filter, the analyzer is not user serviceable. Should it appear to malfunction, please refer to the Troubleshooting Guide or contact Picarro.

### 14.1 Particulate Filter Replacement

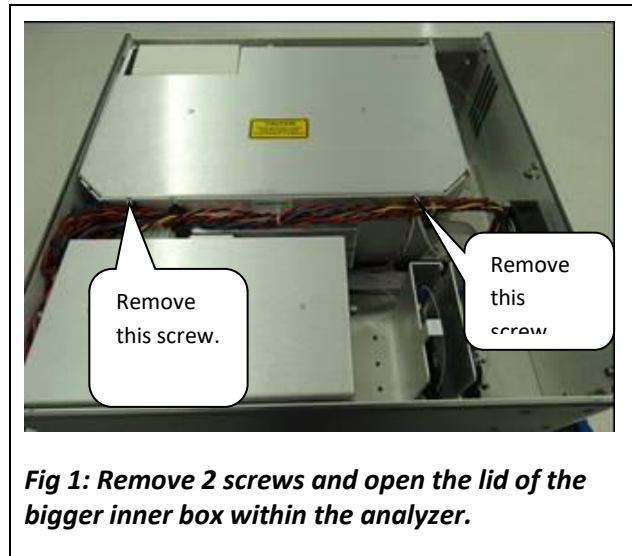
There are two in-line, sub-micron particulate filters before the measurement cavity. The first is user-replaceable and replacement filters can be purchased from Picarro and installed by the user. **It is important to NEVER remove the filter that is directly attached to the cavity. Only change the filter immediately following the inlet at the back of the analyzer. Refer to the filter replacement procedure in this document for further details.** The symptoms of a clogged filter can be analyzer reporting “pressure low” or there being no flow into the instrument, causing unusual measurements. Filters can become clogged after years of use in dirty environments. If liquid water is accidentally sucked into the inlet line, it will clog the filter and impede the flow (usually for a few days) until it evaporates. If this occurs, it is important to NOT turn off the analyzer or replace the filter until it is dry. The reason for this is that the increased humidity due to liquid water in the filter can cause condensation on the optics if the analyzer is allowed to cool from its operating temperature. Often, after the filter dries, the analyzer will begin functioning normally, and a filter replacement is not necessary.

### 14.2 Tools Required:

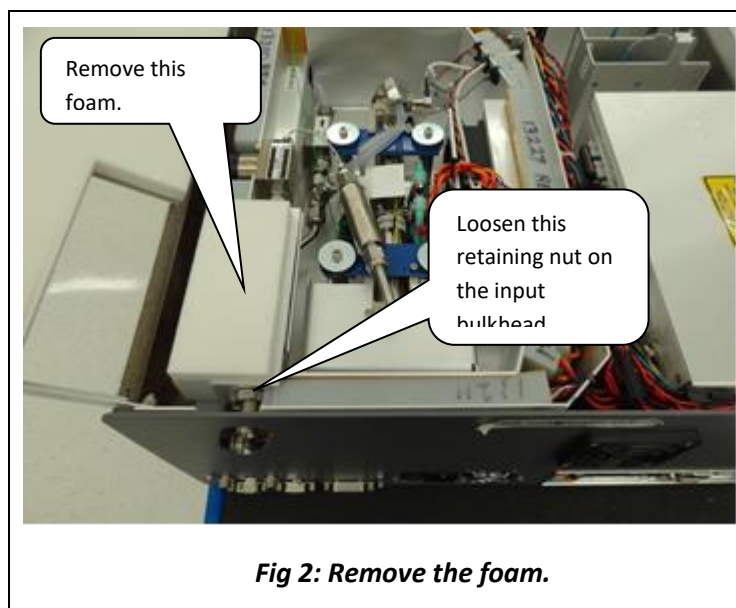
- 1.5mm hex driver
- 9/16” open-end wrench
- 5/8” open-end wrench
- 11/16” open-end wrench

## 14.3 Removing the Old Particulate Filter

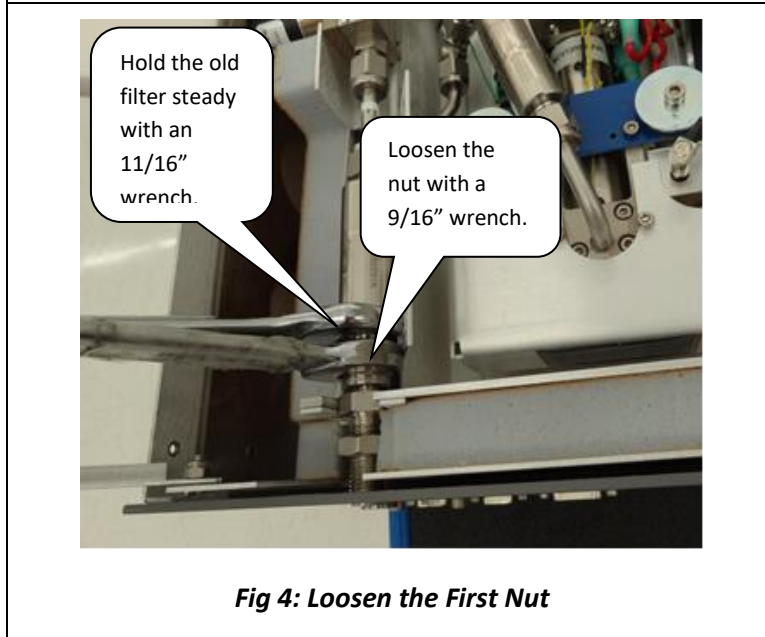
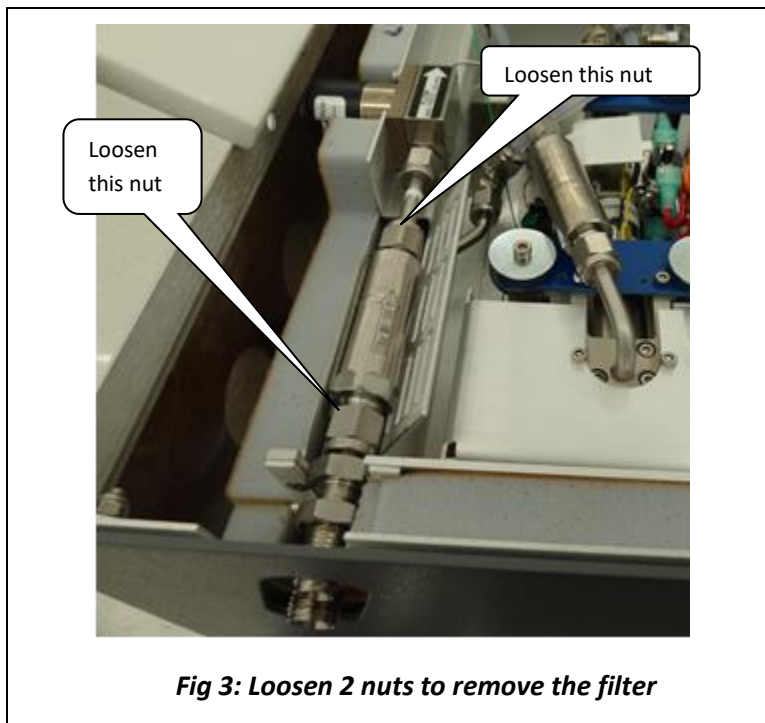
2. Move the analyzer to a clean work environment.
3. Using a 2 mm hex driver, remove the top lid of the analyzer by removing six M3 x 6mm socket flathead screws.
4. Loosen and remove the 2 screws on the inner long side of the bigger box. Open the lid (Fig 1).



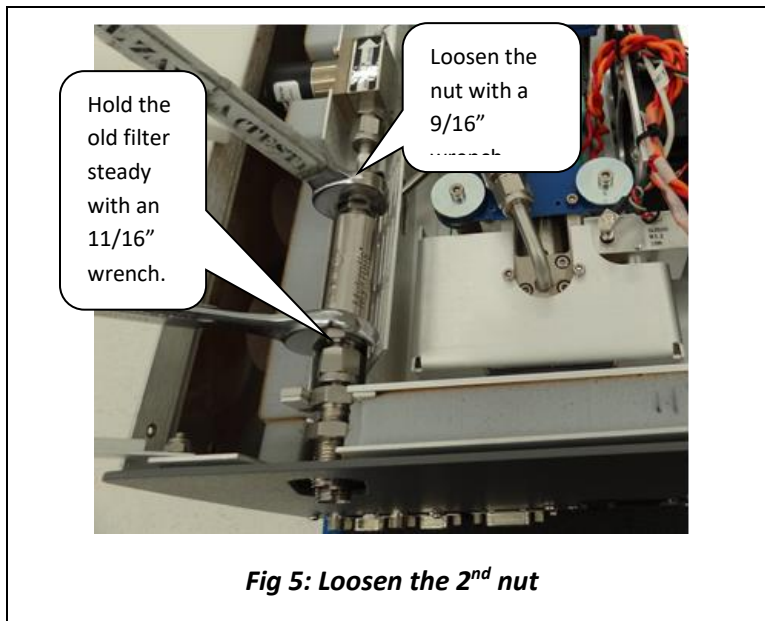
5. Using a 5/8" wrench, loosen the retaining nut on the input bulkhead (about 1 full turn should be enough) (Fig 2).
6. Slide the foam towards left side of the analyzer (from the back of the analyzer) to remove it (Fig 2).



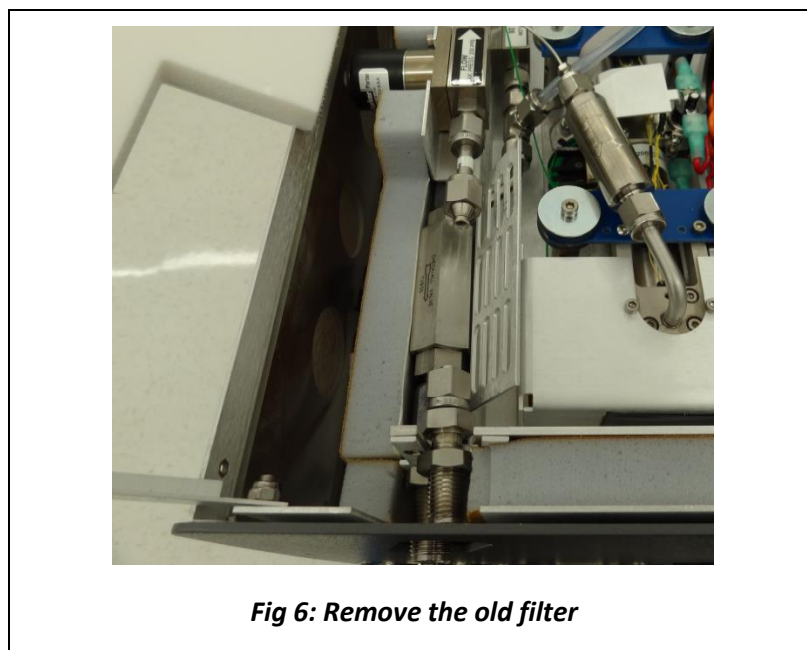
- Using the 9/16" and 11/16" wrenches, loosen two nuts that are connecting the filter to the analyzer (Fig 3, 4, 5).







8. Slide the filter slightly towards the back of the analyzer and lift it out (Fig 6).

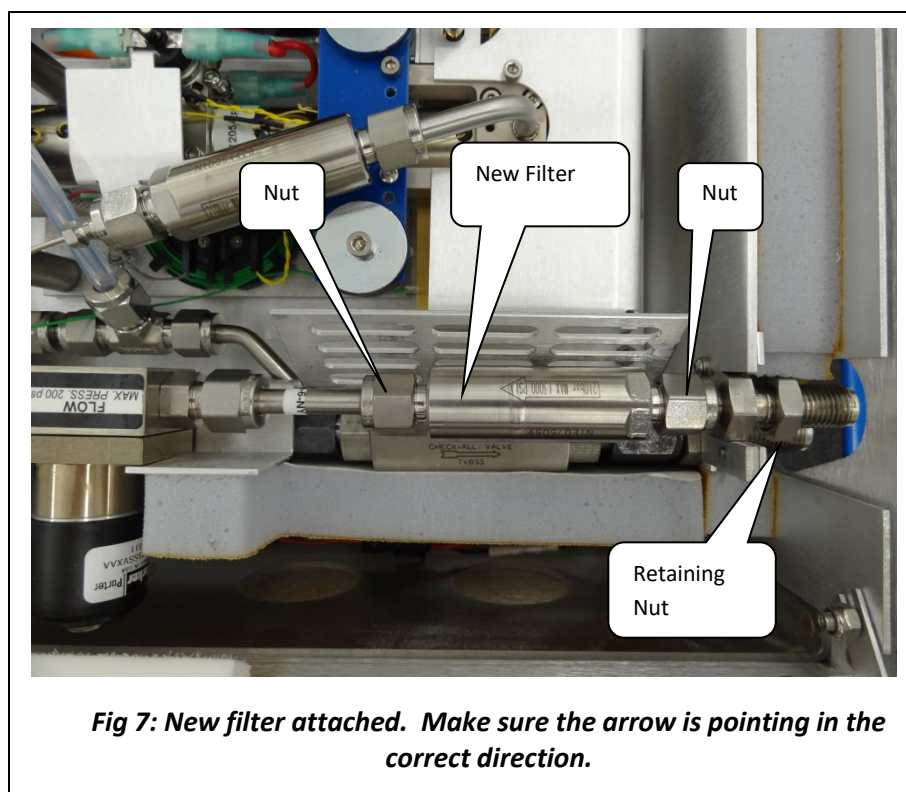


## 14.4 Installing the New Filter



**Note:** When re-attaching 1/4" Swagelok fittings, the nut should be hand-tightened and then turned an additional 1/8 of a turn using a wrench.

1. Remove the filter from its packaging.
2. Using the 9/16" and 11/16" wrenches, attach it to the two nuts. The arrow on the filter needs to point away from the back of the analyzer.



3. Using a 5/8" wrench, reposition the filter foam cover and tighten the retaining nut on the bulkhead fitting. The metal edge of the filter cover should be under the foam.
4. With a 2 mm hex driver, reattach the analyzer's top with 6 screws.


## 14.5 Cleaning

Clean the outside of the analyzer with a clean dry cloth. Only certified service technicians should access or clean the inside of the analyzer.

## 15. LIMITED WARRANTY

Picarro, Inc. warrants its Products to be free from defects in material and workmanship and to perform in the manner and under the conditions specified in the Product specifications for twelve (12) months from shipment.

This warranty is the only warranty made by Picarro with respect to its Products and no person is authorized to bind Picarro for any obligations or liabilities beyond this warranty in connection with its Products. This warranty is made to the original Purchaser only, is non-transferable and may only be modified or amended by a written instrument signed by a duly authorized officer of Picarro. Sub-systems manufactured by other firms, but integrated into Picarro Products, are covered by the original manufacturer’s warranty and Picarro makes no warranty, express or implied, regarding such sub-systems. Products or parts thereof which are replaced or repaired under this warranty are warranted only for the remaining, un-expired portion of the original warranty period applicable to the specific Product replaced or repaired.

	<p><b>DISCLAIMER</b></p> <p><b>THE FOREGOING WARRANTY IS EXCLUSIVE AND IN LIEU OF ALL OTHER WARRANTIES WHETHER WRITTEN, ORAL OR IMPLIED, AND SHALL BE THE PURCHASER’S SOLE REMEDY AND PICARRO’S SOLE LIABILITY IN CONTRACT OR OTHERWISE FOR THE PRODUCT. PICARRO EXPRESSLY DISCLAIMS ANY WARRANTY OF MERCHANTABILITY OR FITNESS FOR A PARTICULAR PURPOSE.</b></p>
---	---

The Purchaser’s exclusive remedy with respect to any defective Product shall be to have Picarro repair or replace such defective Product or credit the Purchaser’s account, whichever Picarro may elect in its sole discretion. If it is found that any Product has been returned which is not defective, the Purchaser will be notified and such Product returned at the Purchaser’s expense. In addition, a charge for testing and examination may, at Picarro’s sole discretion, be made on any Product so returned.

These remedies are available only if: i) Picarro is notified in writing by the Purchaser promptly upon discovery of a Product defect, and in any event within the warranty period; ii) Picarro’s examination of such Product discloses to Picarro’s satisfaction that such defects actually exist and the Product has not been repaired, worked on, altered by persons not authorized by Picarro, subject to misuse, negligence or accident, or connected, installed, used or adjusted otherwise than in accordance with the instructions furnished by Picarro.

The following warranty conditions shall apply to all Picarro, Inc. products unless amended by a written instrument signed by a duly authorized officer of Picarro:

**ADJUSTMENT** – No electrical, mechanical or optical adjustments to the product(s) are permitted.

**PARTS AND LABOR** - New or factory-built replacements for defective parts will be supplied for twelve (12) months from date of shipment of the product. Replacement parts are warranted for the remaining portion of the original warranty period. There will be no charge for repair of products under warranty where the repair work is done by Picarro, Inc.

**NOT COVERED BY THE WARRANTY** – Damage to any optical surface from improper handling or cleaning procedures. This applies specifically to those items subjected to excess laser radiation, contaminated environments, extreme temperature or abrasive cleaning. Damage due to ESD, abuse, misuse, improper installation or application, alteration, accident, negligence in use, improper storage, transportation or handling. No warranty shall apply where the original equipment identifications have been removed, defaced, altered or where there is any evidence of alterations, adjustments, removal of protective outer enclosure, any attempt to repair the product by unauthorized personnel or with parts other than those provided by Picarro, Inc.

**DAMAGE IN SHIPMENT** - Your analyzer should be inspected and tested as soon as it is received. The product is packaged for safe delivery. If the product is damaged in any way, you should immediately file a claim with the carrier or, if insured separately, with the insurance company. Picarro, Inc. will not be responsible for damage sustained in shipment. All Picarro products are F.O.B. origin, shipped from the Picarro factory or Picarro distributor. The price of all Products, unless otherwise specifically stated, is Ex- Works, Sunnyvale, CA as defined by Incoterms, 2001. The cost of normal packaging for shipment is included in the invoiced price. Where Buyer specifies special packaging, a charge will be made to cover any extra expense.

**CLAIMS ASSISTANCE** - Call Picarro, Inc. Customer Service or your local distributor for assistance. Give our representative the full details of the problem. Helpful information or shipping instructions will be provided. If requested, estimates of the charges for non-warranty or other service work will be supplied before work begins.

**RETURN PROCEDURE** - Customers must obtain a Return Merchandise Authorization Number from Picarro, Inc. prior to returning units. Products being returned for repair must be shipped in their original shipping cartons to avoid damage.

## APPENDIX A – REMOTE DATA ACCESS

### A.1 Serial Communication

The analyzer supports an RS-232 physical command interface, which can be used to control the instrument and to retrieve concentration data. Not all features of the instrument are available on the serial interface. For details on how to use the serial command interface, please see the Programming Guide (included in pdf format on the installation CD) and **Section 11.6** of this manual. This command set may also be used across a TCP/IP interface through an Ethernet connection. Please contact Picarro for further details.

### Remote Data Access

Using the RemoteAccess.ini file, the analyzer can be configured to automatically:

1. Send data from the instrument to a list of e-mail accounts.
2. Measure the offset of the host computer system clock from a set of Internet timeservers and (optionally) to resynchronize the clock on the basis of this information.

The Internet connection need not be permanent, and may be a dial-up connection accessible via a user-supplied USB modem. The task of sending data and/or synchronizing the clock on the analyzer is performed using the C:\Picarro\G2000\HostExe\RemoteAccess.exe program. This program can be setup to run periodically using the Windows task scheduler at a user-configurable frequency. If a dial-up connection to the Internet is employed, it is used only on demand in order to minimize the connection time.

Each time that the RemoteAccess.exe program runs, it appends information to a log file, which keeps a record of the results of the time synchronization and of the files sent by e-mail. The RemoteAccess.exe program is configurable by means of an initialization file, which includes information such as the login credentials for the dial-up connection, the e-mail account and the list of timeservers.

The initialization file is:

C:\Picarro\G2000\AppConfig\Config\RemoteAccess\RemoteAccess.ini

It should be placed in the same directory as the executable RemoteAccess.exe. The file has one required section named LOGGING

and three optional sections named NTP, DIALUP and EMAIL. The logging section has a single key Logfile whose value is the path to the log file. Once this log file exceeds 64 kbytes in length, it is backed up appending a numeric extension to the file name and a new file is open. A total of ten backup log files are kept.

## **NTP**

The NTP section controls querying the Internet time servers using the SNTP protocol (RFC4330) and the resetting of the clock on the host computer. If the section is not present, time synchronization is not carried out. The keys Server1, Server2, etc., are used to specify the URLs of the timeservers. As many of these timeservers are interrogated as possible, and the clock offset is computed on using the median of the results obtained from the available servers. If the UpdateClock key is set to true, the offset is applied to the host clock. Otherwise, the offset is recorded, but the host clock is not changed.

## **Email**

The EMAIL section controls the sending of the data files as e-mail attachments. If the section is not present, e-mail messages are not sent. The key Directory specifies the directory that contains the data files. When the program is run, files in this directory are sent to the specified recipients and the files are deleted. In order to avoid problems with incomplete files, programs that place files into this directory should do so using an atomic operation, such as a rename. The Server key is set to the name of an RFC2821-compliant SMTP server that actually sends the e-mail messages.

The From key is the e-mail address from which the messages are sent. Note that some SMTP servers check that the source is permitted to send mail while others allow any name in this field. The collection of e-mail addresses to which copies of the e-mail is sent is specified by the keys To1, To2, etc. The Subject key is used to fill the subject field in the e-mail header, and may be set to any string. Depending on the SMTP server, it may be necessary to use authentication before e-mails can be sent, as described in RFC2554. If such authentication is not needed, the key UseAuthentication is set to false. If this key is set to true, two additional keys Username and Password must also be specified for the e-mail account.

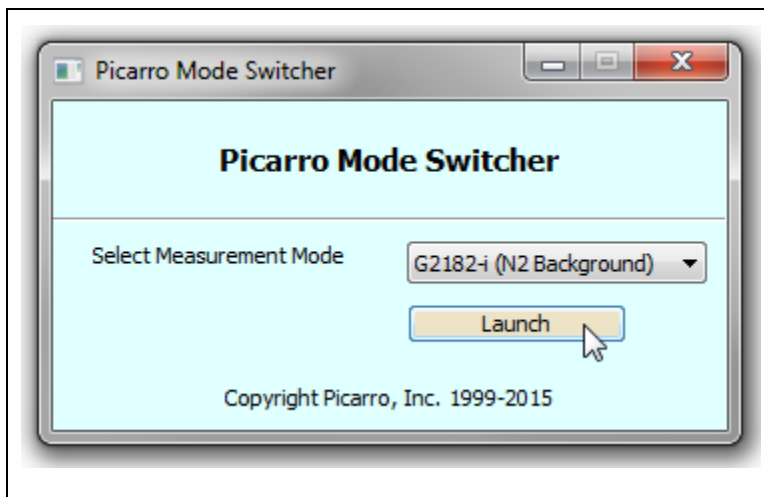
## Dialup

The DIALUP section is used if a dial-up connection to the Internet needs to be established when the program runs. If the section does not exist, a permanent connection is assumed to be available for carrying out the other tasks specified in the initialization file. The ConnectionName key specifies the name of the dial-up connection to use, as listed under Network Connections in the Control Panel. The values of the keys Username, Password and Number are used to make the connection.

### Example of “RemoteAccess.ini” File

```
[LOGGING]
Logfile=c:/temp/RemoteAccessLog
[NTP]
Server1=time-a.nist.gov
Server2=time-b.nist.gov
Server3=time-a.timefreq.bldrdoc.gov
Server4=time-b.timefreq.bldrdoc.gov
Server5=time-c.timefreq.bldrdoc.gov
Server6=time.nist.gov
Server7=time-nw.nist.gov
UpdateClock=1
[DIALUP]
ConnectionName=Picarro Dialup Access
Username=user
Password=password
Number=14085551212
[EMAIL]
Server=smtp.servername.org
Directory=c:/picarro/mailbox
From=instrument@picarro.com
To1=recipient1@site1.com
To2=recipient2@site2.com
Subject=CRDS data from Silverstone instrument
UseAuthentication=0
```

## APPENDIX B – G2182-*i* MODE SWITCHER



Below are descriptions of different Measurement Modes offered by Picarro's G2182-*i* analyzer:

- **[1: G2182-*i*]** : Measures only high concentration (1000ppm to 15000ppm) of CH<sub>4</sub> and for  $\delta$ D and  $\delta^{13}$ C analysis. (N<sub>2</sub> background or Air Background denotes the background gas matrix specified during calibration and sale of the instrument.)

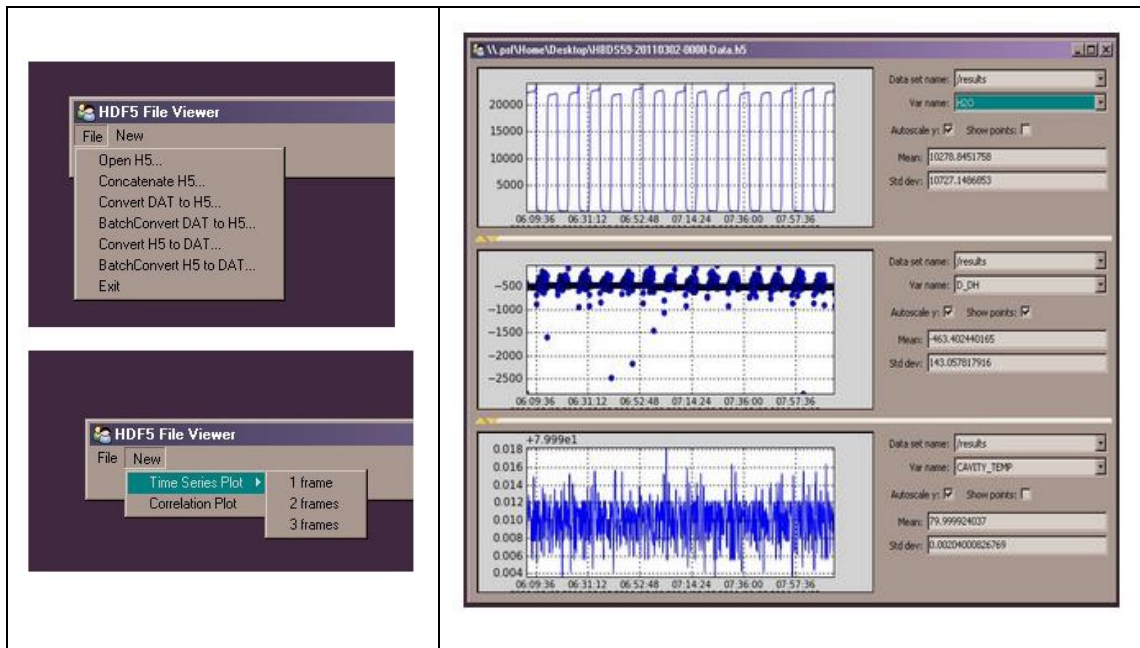


## APPENDIX C – DATA FILE VIEWER

Picarro 2XXX-series analyzers allow users to archive data using a highly-compressed, binary “HDF5” or “h5” format.

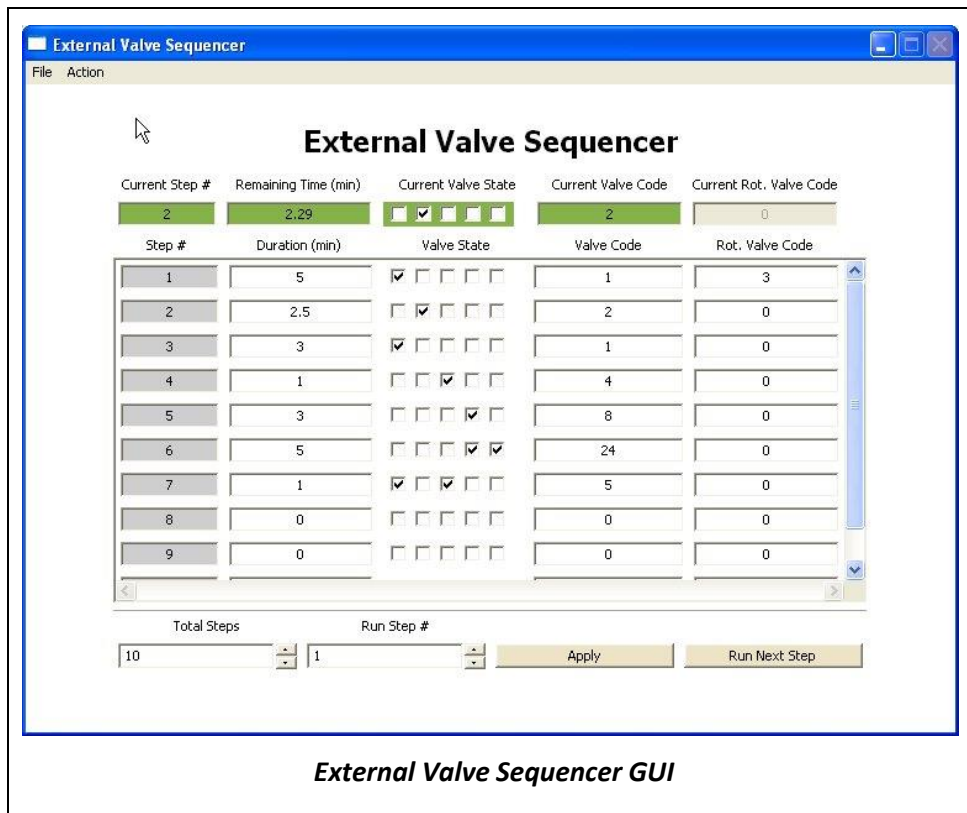
Screenshots below show the Data File Viewer program, which can be found in the “Picarro Utilities” Folder on the analyzer’s desktop. This programs allows you to open h5 files, convert h5 files to \*.dat files (also convert \*.dat to h5), as well as to do batch conversions. Through this program, multiple h5 files can be joined, and then viewed as graphs. In the graph window, you can select any of the data columns in the file, autoscale, zoom, hide/show points, and calculate statistics of data within the graph window.

If you have any questions, please contact Picarro or refer to Picarro Community for more information. <https://www.picarro.com/support/community>



# APPENDIX D – EXTERNAL VALVE SEQUENCER

The Picarro valve sequencer window appears as below:



## D.1 Introduction

The Picarro analyzer can control two types of valves:

1. Solenoid valve(s): DC voltage powered valve with normally open (NO) and normally closed (NC) positions. These can be either 2-way or 3-way valves.
2. Rotary Selector valve: digitally controlled valve used to send selected flow from one of many inputs (up to 32) into the analyzer

Both types of valves can be simultaneously controlled through a common software interface called the 'External Valve Sequencer' which is available from the Tools menu in the GUI.

## D.2 Default Configuration

For all models of Picarro analyzers the rotary valve control is disabled in the factory default setting. The solenoid valve control, however, are ready to use by default for all solenoid valve connectors.

## D.3 Setting up Solenoid Valves

Up to six solenoid valves can be controlled by the Valve Sequencer software. Each valve should operate using 12 VDC with a current requirement of <1.5 Ampere maximum. This analyzer comes with a cable which can be connected to the solenoid valves.

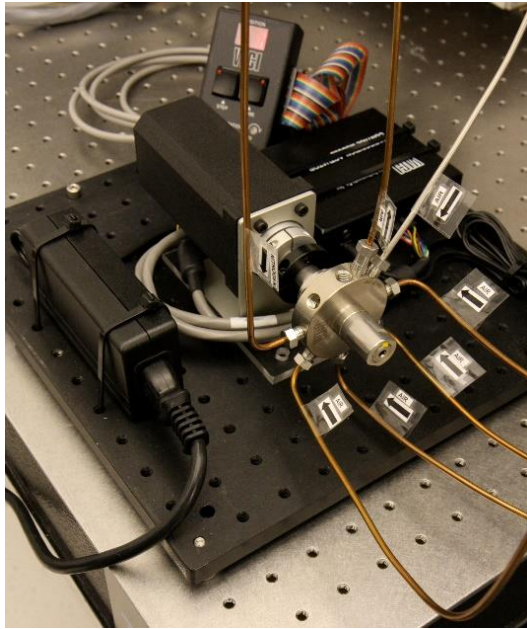
The valve connector cable should be connected to the 15-pin connector at the lower left corner of the analyzer. There are six pairs of wires with connectors labeled V1, V2, ...V6 with 2-pin female Molex connectors (Molex#43020-0200) for connection to the solenoid valves. Connect V1 to solenoid valve 1, V2 to solenoid valve 2, etc. for valves wired with matching Molex connectors. Do not connect the solenoid valve to the analyzer ground -- use only the provided electrical connectors.

## D.4 Setting Up Rotary Selector Valve

A multi-position rotary selector valve can be controlled by the Valve Sequencer software. It is controlled by standard serial commands in the Valco (VICI) protocol. Valco rotary valve models SD, SC, SF, ST, and STF are all supported (not all configurations will be appropriate due to tube diameter, pressure or materials of construction). This setup will also require a Valco microelectric high torque actuator. A single combination package such as EMT2ST16MWE includes a 16 position, low-pressure ST valve in stainless steel, 1/8" tubing, 2" standoff, and microelectric high torque actuator. Please refer to <http://www.vici.com> for further options and consult with Valco directly for more details.

The Valco controller should be installed per manufacturer's instructions. The 9 pin female, connector cable (female) should mate with its corresponding, male port of the analyzer and labeled "MPV". Please note the 9 pin connector cable is not supplied with the instrument.

The setup will be similar to that in the pictures below:



## D.5 Valve Sequencer Software

The Valve Sequencer software allows the user to set steps in which solenoid valves are turned on/off and the rotary selector valve is set to a single position. The current step, elapsed duration, and valve states are shown in the top most row of the valve sequencer command window. The duration of each step is set in minutes; for example, 1 minute and 30 seconds corresponds to 1.5 minutes.

Please note the number of steps correlates with the total steps in the sequence. But the count of the steps starts at “0”. So, according to the image, the first step of the sequence is designated Current Step “0” and the second step in the sequence is designated Current Step “1”. The “Go to First Step” menu item under “Action” restarts the sequence from step 1.

Different sequences can be created and saved in the software. Use the “Sequence File #” field to select which file the sequence will be saved to (0 to 10 are the available choices). Click the up/down arrows to select the desired number.

## D.6 Configuring a Valve Sequence

Each “step” sets the rotary valve to a single position and activates the indicated solenoid valve(s) for a set period of time. Multiple steps can be carried out in sequential order to switch between different gas sources, flush out a manifold, or other gas handling operation. Create the number of desired steps in the sequence by clicking the up/down arrow for “steps”.

For each step select the box for each solenoid valve to be opened. The check mark in the “current valve state” window indicates a solenoid valve is open. Note: In this example, we assume normally closed (NC) valves are used. A check indicates current is flowing to the valve thus powering it open. The positions from left to right correspond to solenoid valves V1...V6.

The rotary selector valve position can be set in the column labeled “Rot. Valve Code”. Enter the number that corresponds to the desired valve position. A value of 1 in this field corresponds to position 2 on the Valco valve. Only one rotary position can be selected per step.

Step duration is determined by the value entered in the “duration (min)” field, where the duration of the step is in minutes. If duration values are set to <0.1 minutes they may not be carried out correctly.

The “valve code” field is a configuration- dependent, read-only display field that shows the total state of that particular step in a numerical code. Should the most upper right grey box display a value of 512, 256 or be greyed-out, that indicates no rotary selector valve is connected to the instrument, or it is not functioning. For each individual measurement the analyzer makes, the valve codes and rotary valve positions corresponding to the valve state(s) at that point in time are saved alongside the concentration data.

Once the valve sequence has been programmed, it can be saved using the button “save valve sequence file”—it will be saved under the sequence file number selected.

## D.7 Loading and Running a Saved Sequence

To load a valve sequence file, select the desired “sequence file number” and press “load valve sequence file”. If the user has been running a different sequence from the one that was loaded, the user needs to press “Next Step” to initialize the newly selected sequence.

To run a sequence file press “Enable Sequencer”, this button will turn to “Disable Sequencer” once the sequence starts. (The sequencer should be

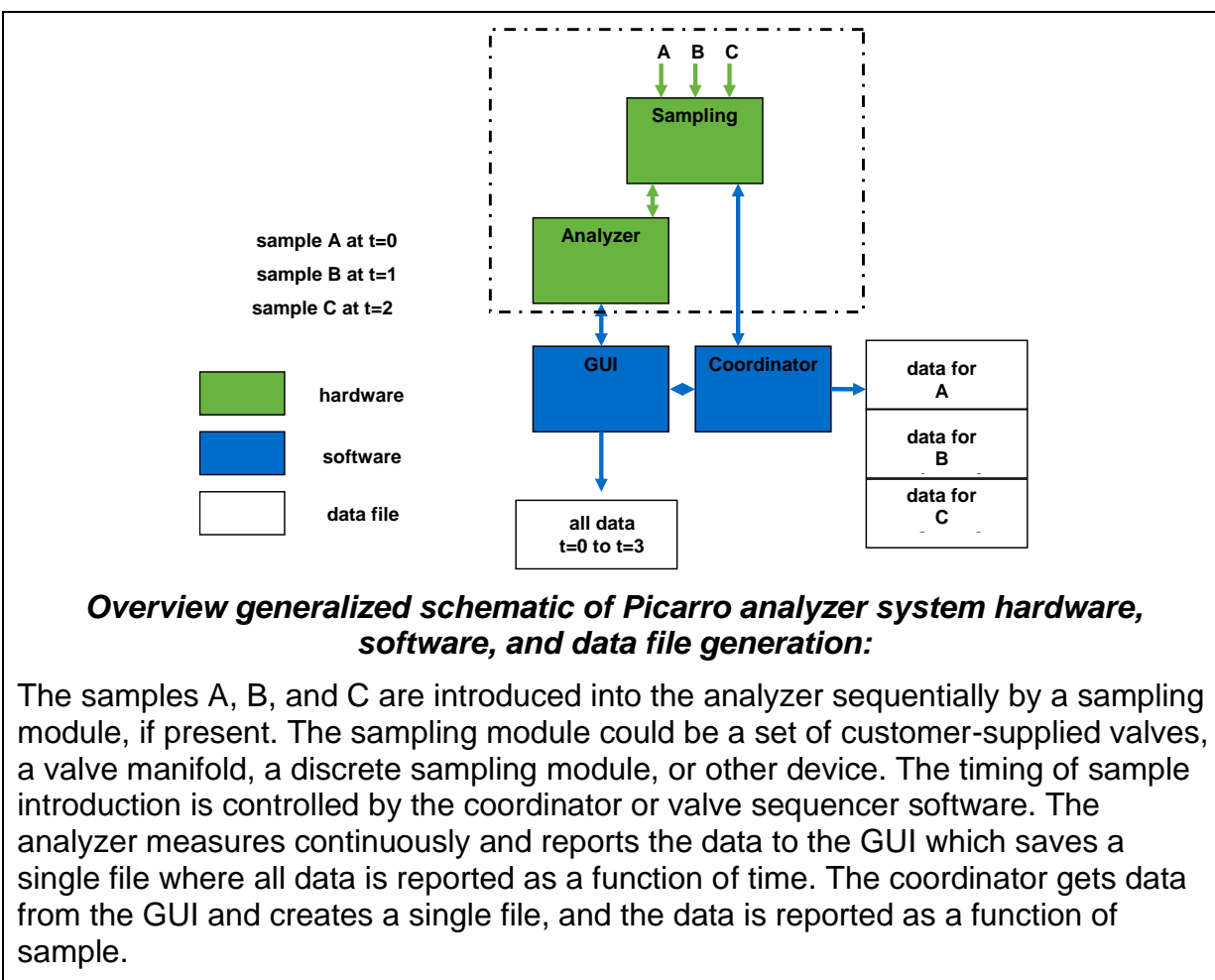
activated if it was disabled but not necessary to change from one sequence to another). The sequence will repeat itself indefinitely until disabled or the software exited. If enabled, the sequence will continue to run after the “close sequencer window” button is pressed.

If desired, the valve sequence can be forwarded to the next step of the sequence by pressing the “run next step” button. To stop the sequencer file, use the “Start/Stop Sequencer” menu item under the “Action” menu. This will leave all valves in their current state. In some situations, it is convenient to program the last step in the sequence to be a safe or default valve state. The sequencer can be advanced to the last step should the user need to put the solenoid or rotary valves into a safe/default state. The “Reset All Valves” de-activates all valves. Using the “Hide Sequencer Interface” closes the window, but if the sequencer is enabled, it will continue to run in the background. To jump to a particular step, increment the “run step 3” and click “Apply.”

Both solenoid and rotary valve codes are recorded in columns in the output data files indicating the active valve configuration respective to when data is taken. These codes can be used as event timing flags. For example, if no solenoid valves are present, the codes will be recorded regardless of whether a valve is connected or not.

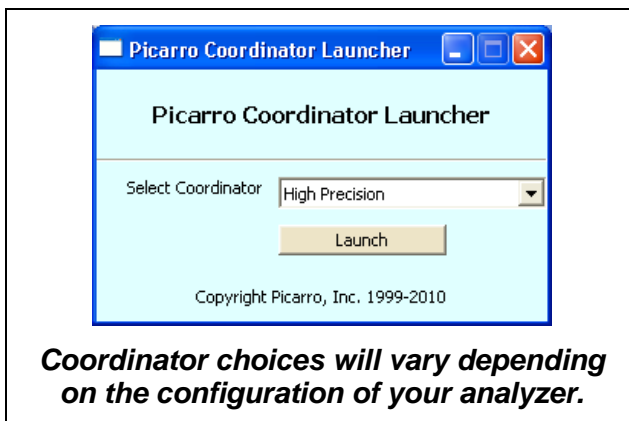
## APPENDIX E – COORDINATOR WINDOW (OPTIONAL)

In order to measure discrete samples (such as individual gas bags) or from multiple locations (when switching valves draw in ambient air from different heights. see **APPENDIX D** – for more information) a separate software window (coordinator) is used to control the sample source and match the corresponding real time read out with the sample source. **Depending on system configuration, coordinator programs may or may not be included.** This section describes how to run the coordinator software.

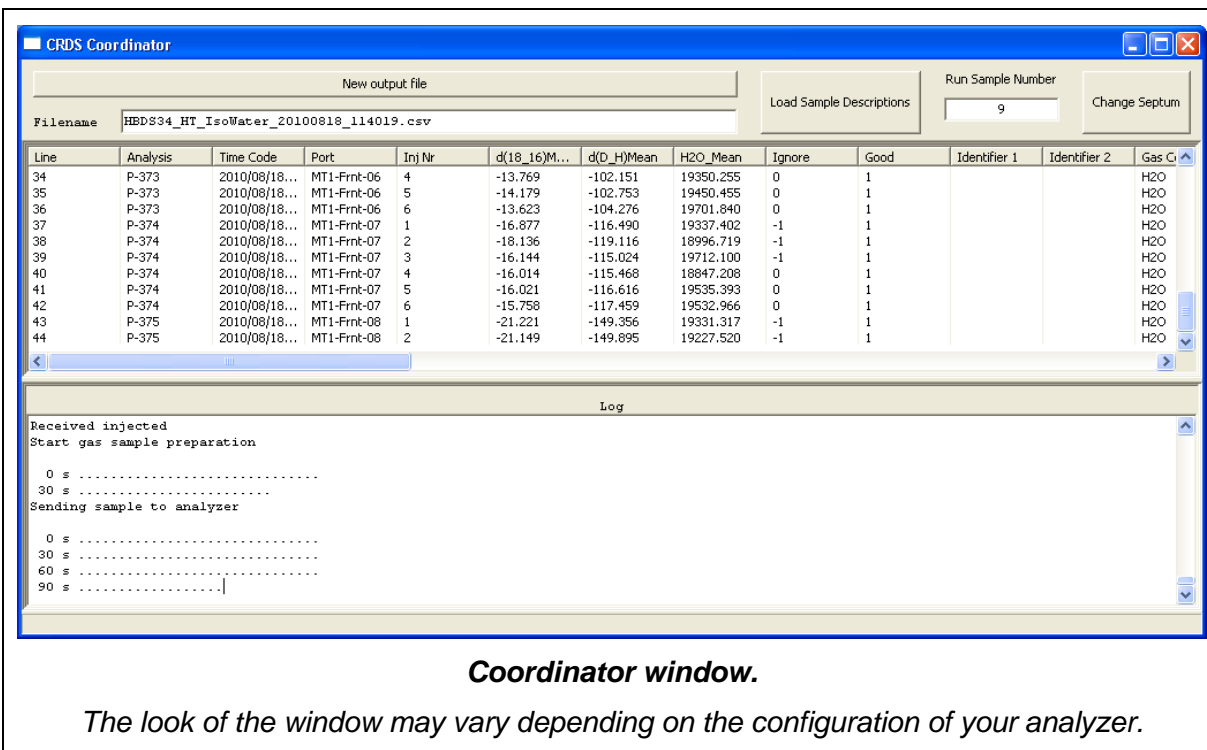


First, make the required hardware connections for your system of interest. Afterwards, turn on the analyzer and wait for the GUI (Graphical User Interface) of the analyzer’s software to open up automatically on your desktop screen. Next, launch the coordinator software by double clicking on the ‘Coordinator Launcher’ icon on your desktop.

After double clicking on the ‘Coordinator Launcher’ icon, a window will appear. Choose the appropriate coordinator from the drop down menu, and then click on the ‘Launch’ button. Make sure that the chosen coordinator is supported by your hardware connections and that samples (or gas from multiple locations) are ready to be analyzed.



After clicking on the “Launch” button, the coordinator window will pop up (depending on the coordinator mode chosen, you may or may not be asked to set parameters for your analysis). From the Coordinator window, you will be able see results from sample analysis, see the current status of your analyzer, and load sample descriptions.





## APPENDIX F – PEAK/PULSE INTEGRATION SOFTWARE

This appendix provides information on how to use the Peak Integration Software to integrate the infrared absorption curve of isotopic methane from GC runs. The CRDS concentration and isotopic measurements can be seen on the CRDS Data Viewer Window. The software provides easy-to-understand detailed measurements, including the concentration of both  $^{12}\text{CH}_4$ ,  $^{13}\text{CH}_4$  and  $\text{CH}_3\text{D}$ , and the isotopic ratio expressed as  $\delta^{13}\text{C}$  and  $\delta\text{D}$ .

**Step 1:** Double click on the "Coordinator Launcher" icon on the analyzer's desktop.



**Step 2:** The "Picarro Coordinator Launcher" will appear on your desktop. Click on the drop-down menu and select the "Peak Integration Coordinator" or "Pulse Integration", then click on the launch button.



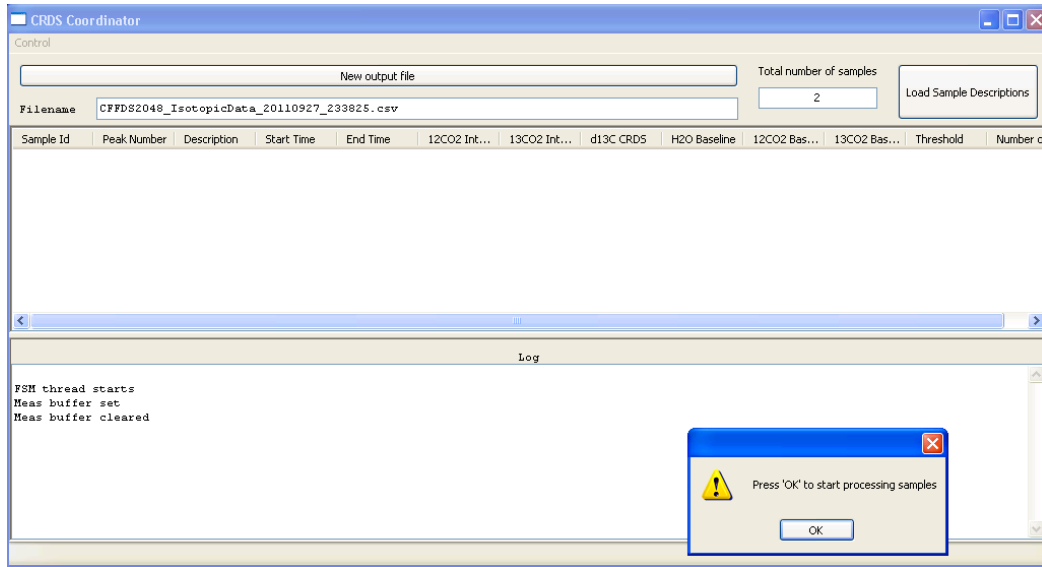
**Step 3:** The following user interface will then pop up.

Parameter	Value
Total number of samples	2
Pre-trigger time (seconds)	5
Post-trigger time (seconds)	120
Threshold ratio above baseline (%)	1000.0
Wait time to clear all pulses (seconds)	300.0

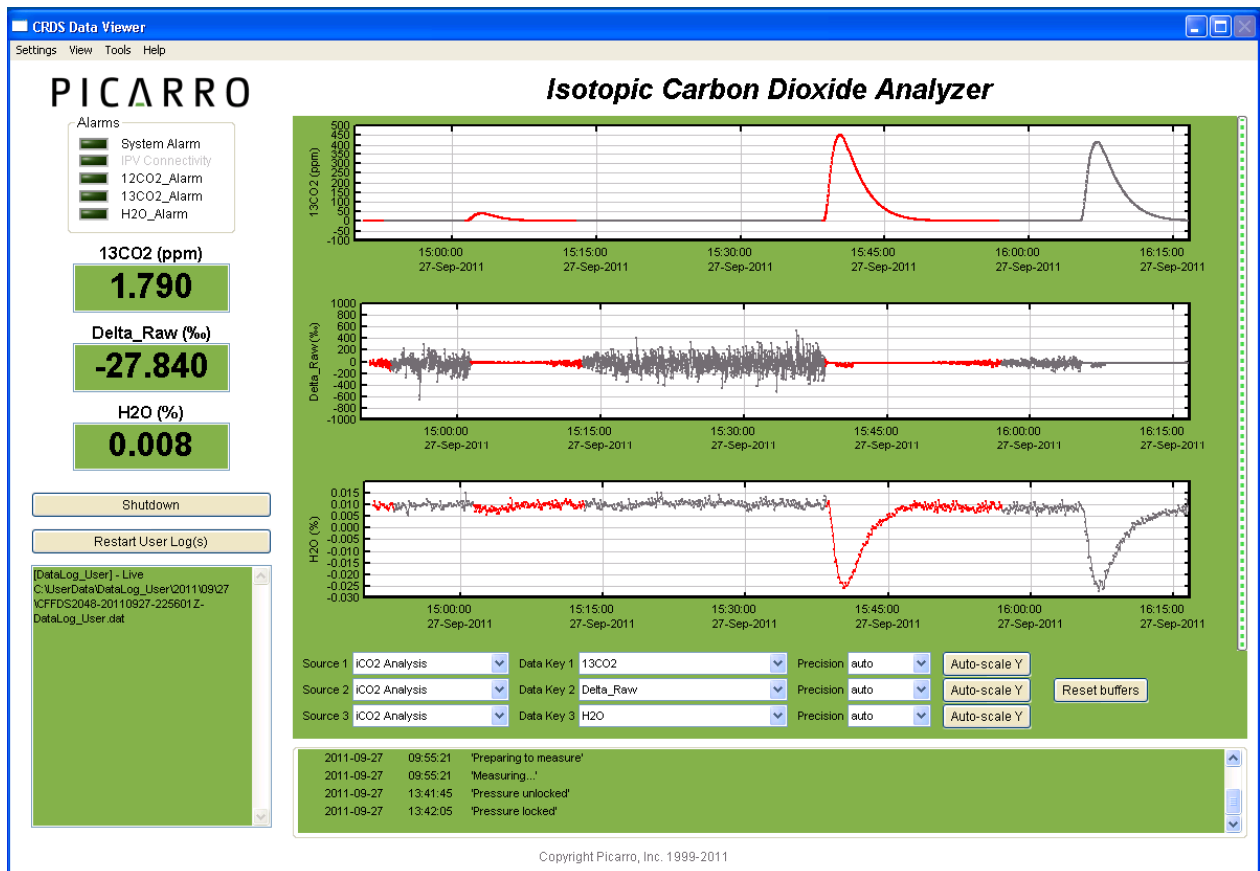
This “User Editable Parameters” window can be used to set various parameters for your sample analysis.

1. Specify the **total number of samples** you plan to analyze.
2. Pre-trigger time and post-trigger time will be pre-populated with values recommended by Picarro. However, they can be modified easily on this window:
  - Pre-trigger time:** is the time it will take to go from baseline to threshold.
  - Post-trigger time:** is the time it will take to return from threshold to baseline.
3. The “**Threshold above baseline**” is the percentage of baseline you want your threshold to be. For example, if you set this value to 1000% and your baseline is 10ppm, then your threshold will be 100ppm.
4. Lastly, the “**Wait time to clear all pulses**” or “**Runtime**” is the time that your CRDS will wait before it will attempt to trigger the next sample analysis.
  - **How to set a good pre-triggered time:** 0.0 seconds is an adequate time to use.
  - **How to set a good post-trigger time:** 0.0 sec is adequate.
  - **How to set a good threshold above baseline:** 500.0ppm is a good starting value.
  - **How to set a runtime between pulses:** Depends on the application, 900sec for now should work well. The wait time should be longer than any wait time between any two eluting peaks or longer than the time it takes for the first peak to elute from the GC column (whichever is longer).
5. After you’ve typed in your desired measurements, click “OK” to confirm.

**Step 4:** The following windows will pop up next. Before clicking “OK” to start processing your samples, please check to make sure that your samples are ready for analysis in the GC autosampler.



**Step 5:** After clicking “OK”, the Graphic User Interface (GUI) will pop up on your desktop. The GUI below shows graphs after two sample analysis by a CRDS.



## Description of the Figure

The **top graph** shows two large pulses, each pulse representing infrared absorption of one sample. You will notice that one of the pulses is highlighted in red. The **curve highlighted in red** represents the area that will be integrated to calculate the concentration of a specific gas type (e.g  $^{12}\text{CH}_4$ ) by the Peak Integration Software. The highlight in red includes the pre-triggered, the triggered, and the post triggered phases.

Before each pre-triggered phase, baseline measurements occur. After each post-trigger phase, there is a wait time to clear all pulses before another trigger.

On the top graph, you see a small bump highlighted in red in front of two large pulses. This is a failed case of trigger that never went through due to threshold never having been reached.

**Step 6:** The “CRDS Coordinator” window can be seen on analyzer’s desktop at the same time as the GUI window. The “Peak Integration Software” will automatically upload your data into this “CRDS Coordinator” window. Click on the “Load Sample Descriptions” to add a description for each sample.

Sample Id	Peak Number	Description	Start Time	End Time	12CO2 Int...	13CO2 Int...	d13C CRDS	H2O Baseline	12CO2 Bas...	13CO2 Bas...	Threshold	Number of ...
1	1	Test 1	2011/09/27...	2011/09/27...	9014938.847	97867.354	-42.977	-0.026	4.031	0.057	41.307	1047
2	1	Test 2	2011/09/27...	2011/09/27...	8222712.877	89607.444	-39.613	-0.028	16.803	0.194	169.035	811

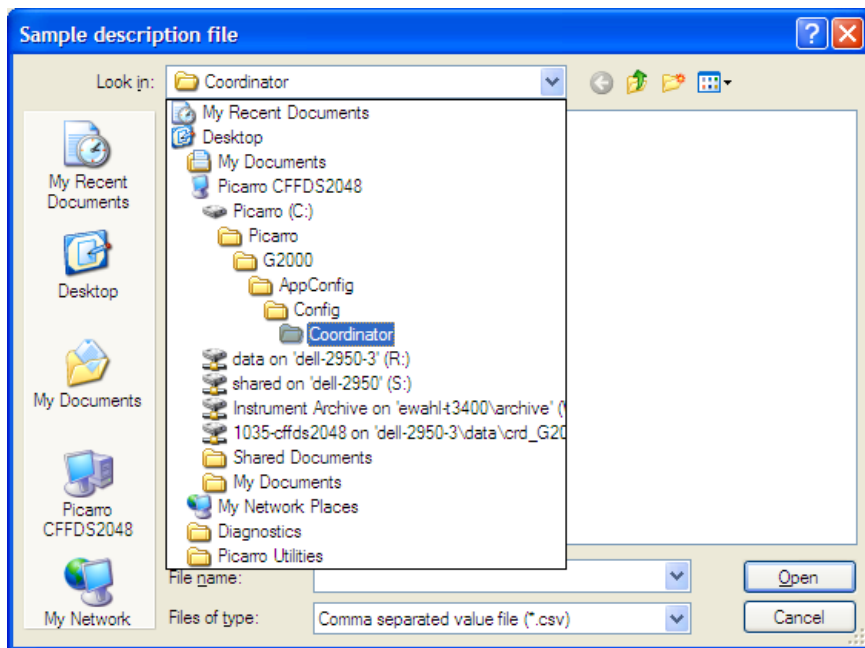
## Description of the Figure

The CRDS Coordinator window shows detailed measurements made for each sample run. Below describes each column.

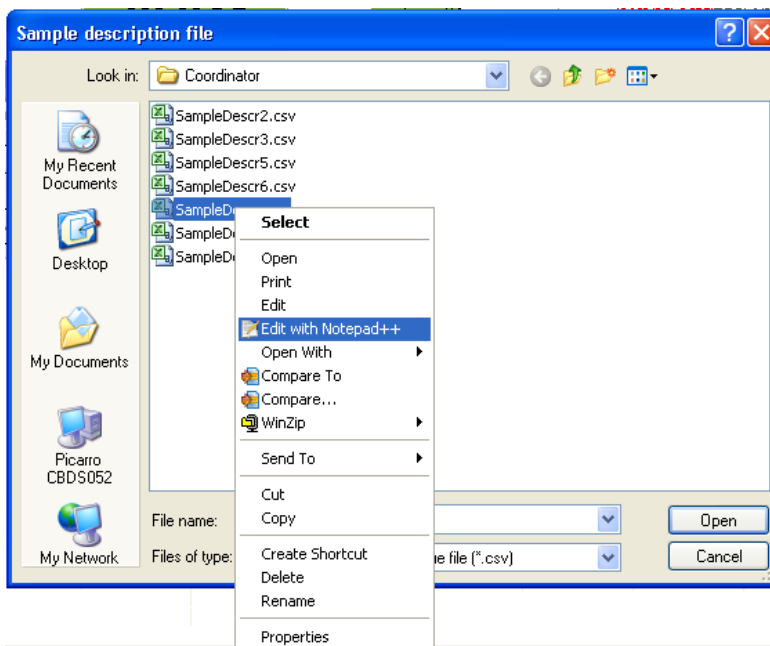
1. **Sample Id:** Identification number for each trial.
2. **Peak Number:** Number of pulses for each sample analysis - Typically one for each sample.
3. **Description:** Name given for each trial.

4. **StartTime:** Date and time at the start of a sample run.
5. **EndTime:** Date and time at the end of a sample run.
6. **<sup>12</sup>CH<sub>4</sub> Integration:** Concentration of <sup>12</sup>CH<sub>4</sub> in a sample.
7. **<sup>13</sup>CH<sub>4</sub> Integration:** Concentration of <sup>13</sup>CH<sub>4</sub> in a sample.
8. **δ<sup>13</sup>C CRDS:** Ratio of stable isotopes <sup>13</sup>C and <sup>12</sup>C in parts permil in a sample.
  - a.  $\delta^{13}\text{C CRDS} = ( ( ^{13}\text{C}/^{12}\text{C} )_{\text{Sample}} / ( ^{13}\text{C}/^{12}\text{C} )_{\text{Standard}} ) - 1 ) \times 1000\%$
9. **H<sub>2</sub>O Baseline:** Water that was present before a sample run.
10. **<sup>12</sup>CH<sub>4</sub> Baseline:** <sup>12</sup>CH<sub>4</sub> that was present before a sample run.
11. **<sup>13</sup>CH<sub>4</sub> Baseline:** <sup>13</sup>CH<sub>4</sub> that was present before a sample run.
12. **Threshold:** Point where a trigger happens.
13. **Number of Data Points:** Number of measurements taken during one sample run to make up a curve.

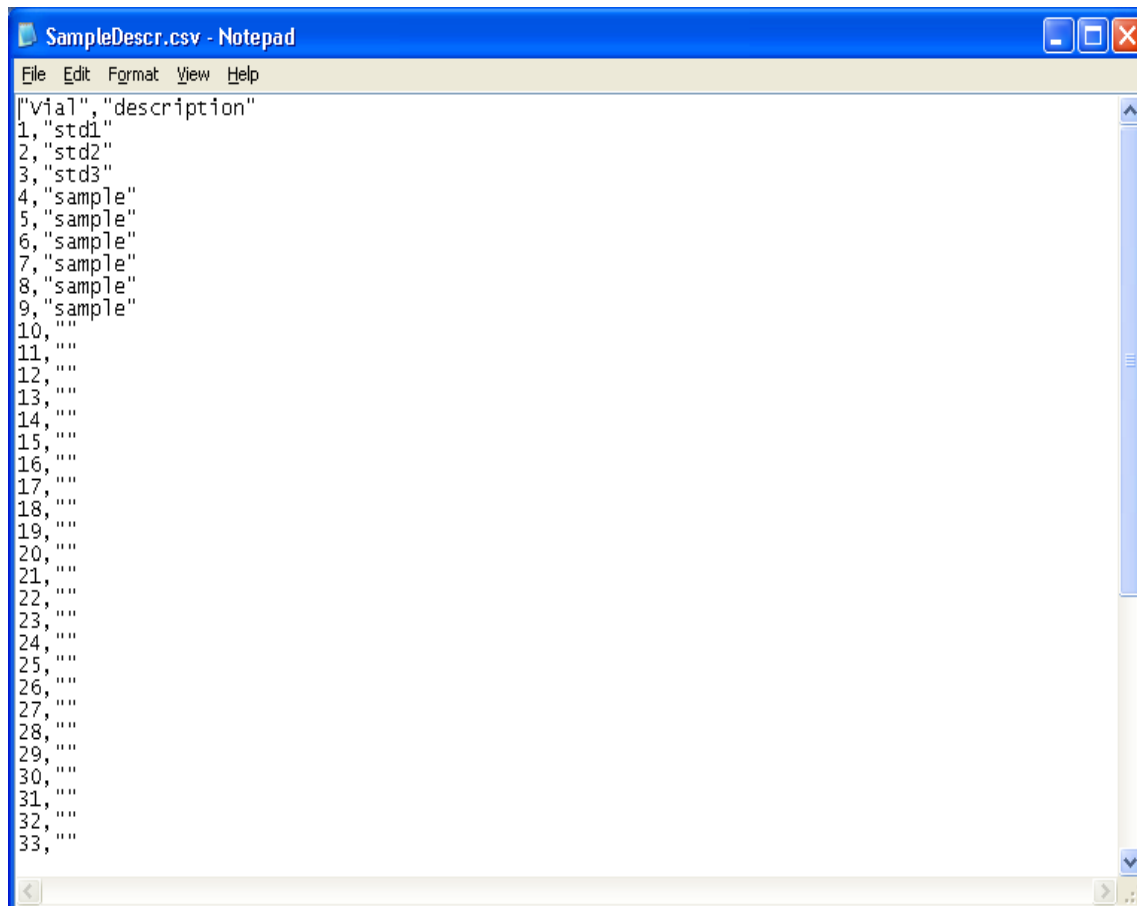
**Step 7:** To enter the description of the samples being analyzed, you need to create a “SampleDescr.csv” file. To do so, please go to your “Picarro Hard Disk Drive(C:)” under “Computer”. The figure above shows the chain of directories which you can follow to find your “SampleDescr.csv” file.



**Step 8:** Right-click on “SampleDescr.csv” file, and select “Edit with Notepad++”.



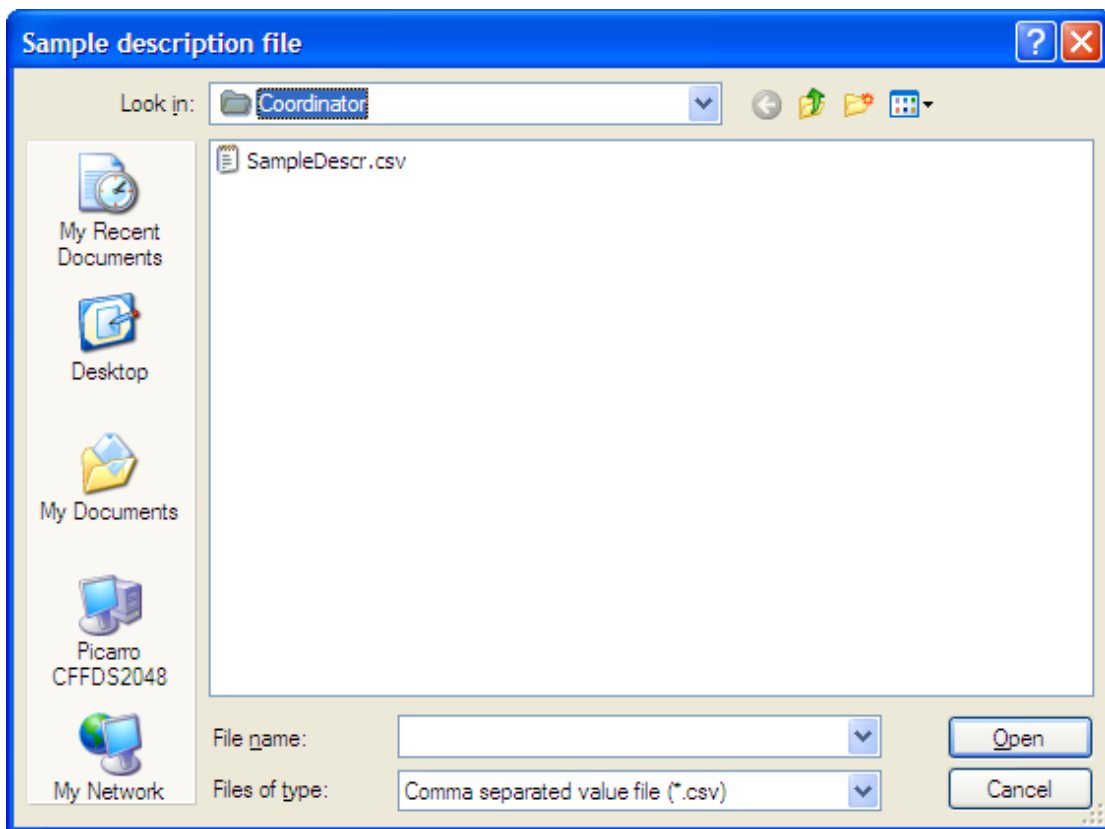
**Below** is an example of a “SampleDescr.csv” file.



**Step 9:** The sample description needs to be entered between quotation marks, as shown above. “Vial” designates the sample number and it does not require quotation marks. Sample numbers corresponding to empty quotation marks (“”) will be entered as a blank in the description column of the coordinator. Once you enter all the sample descriptions, save the file under the current name or under any other name you choose.

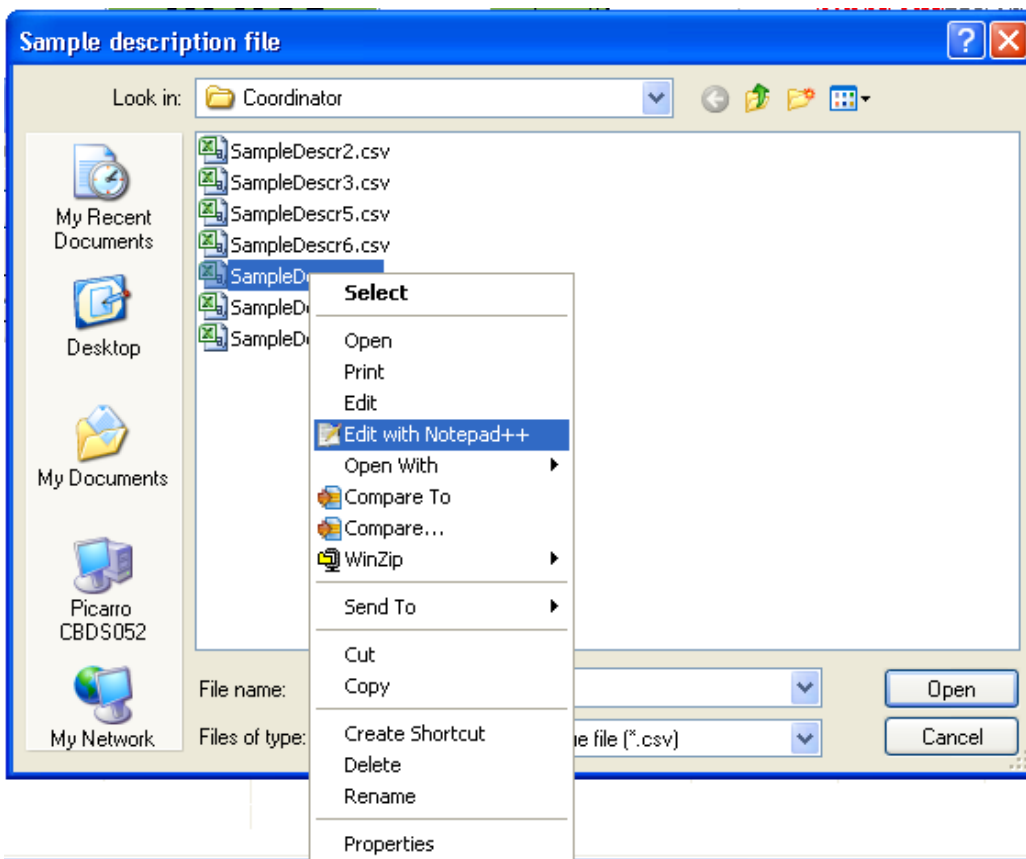
**Note:** You only need to populate the description corresponding to the total number of samples run. Sample numbers corresponding to empty quotation marks (“”) will be entered as a blank in the description column of the coordinator.

**Step 10:** To load the sample description file, click on the “Load Sample Descriptions” button at the upper right hand side of the coordinator window. The window displayed below will pop up. Double-click on the “SampleDescr.csv” file and this will load the description corresponding to the sample being analyzed, after the individual sample analysis is finished and its data is reported into the coordinator.



**Step 11:** You can edit and re-load the sample description file at **any time during analysis** in case the sample descriptions need to be modified. You can edit the description for each sample sequence on this document as long as the sequence is still running and samples are being analyzed. Once the sequence ends, however, the sample description cannot be changed from the coordinator window. If the sample description need to be changed after the sample analysis is finished, the user can introduce those changes directly into the results file.

To edit and re-load the sample description file at **any time during analysis** press the “load sample descriptions” button again, then right-click on the SampleDescr.csv file and select “Edit with Notepad++”.



Once the sample description file is open, introduce the edits you desire, save the file and close it, and then double click on its icon in the “Sample description file” open window.

**The output results** file is saved in *C:\Picarro\IsotopicData*